

DimOn



ENFA Flatval with Froya Complete

Norwegian Drift

Freeware scenery for P3D and FSX
Version 2.0

Flatval is a tiny private airfield located on the rocky island of Frøya, on the western coast of Norway.

There is no regular service, and you won't see a plane here very often. Flatval's territory is used mostly by a local motor club and for the various racing events.

The scenery is very accurate according to the latest satellite images and photos. The airport is really small, so it only has space for a pair of Cessna-like birds, or maybe for a single Twin Otter. There are no nav aids or radio comms at all, and the runway is unlit, so make sure you are flying to Flatval at day and in good weather (see the included map for directions).

Another major part of this package is the whole island of Frøya, recreated from the ground up and down to the tiniest detail. Multiple points of interest weren't forgotten, so flying low and slow over the Frøya won't be boring.

ENFA Flatval features:

- Precise layout and accurate marking for the runway and the racetrack
- Seasonal photo background with night lighting, blends nicely with Orbx products
- Custom GSX preset
- Compatible with P3Dv4, P3Dv3 and FSX
- Latest available charts included (July 2018)
- Compatible with Orbx Norway *

Frøya Complete features:

- The whole island of Frøya has been rebuilt from scratch with the utmost accuracy
- Custom high resolution mesh and precise shoreline
- Every road, lighthouse, pier and major village in the area
- Compatible with P3Dv4, P3Dv3 and FSX
- Hundreds of smaller islands, including Dolmøya, Sula, Måøya, Uttian, and Inntian
- Multiple POIs

*** Note on Orbx Norway compatibility**

You might encounter some minor issues with the "Frozen surface" feature of Orbx Norway. It is recommended to disable this feature, especially when flying outside of the "hard winter" months (January, February, and late December). To do so, launch FTX Central, find EU Norway, open its Control Panel and switch it to "Open water".

INSTALLATION

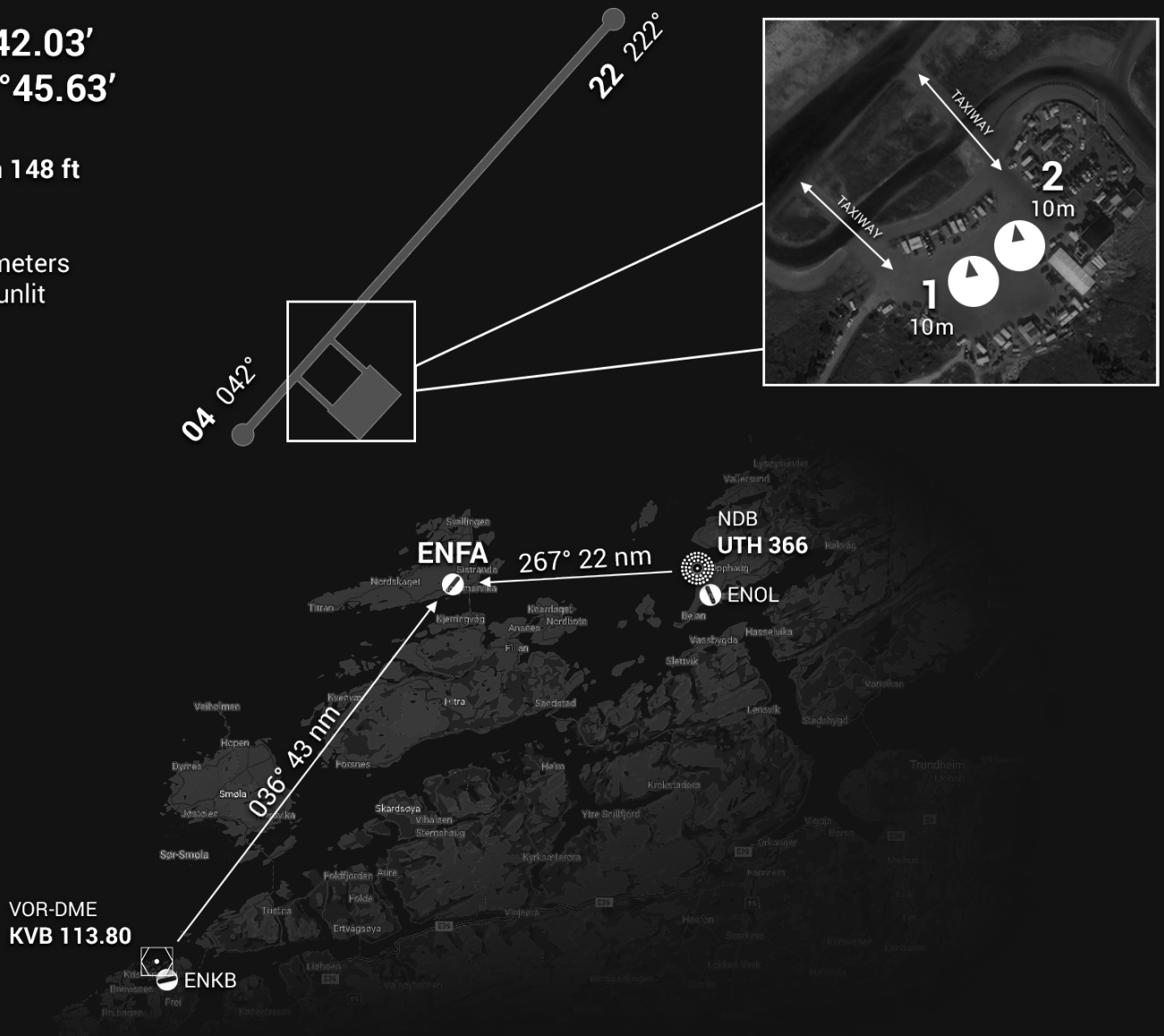
1. Delete other ENFA scenery if you have one
2. Manually add "ENFA Flatval by DimOn" folder to your P3D or FSX scenery library
3. If you have Orbx Norway, this scenery must have higher priority (place it above Orbx entries in your scenery library)

SCENERY CHART AND DIRECTIONS

N 63°42.03'
E 008°45.63'

Elevation 148 ft

Runway
730x15 meters
asphalt, unlit



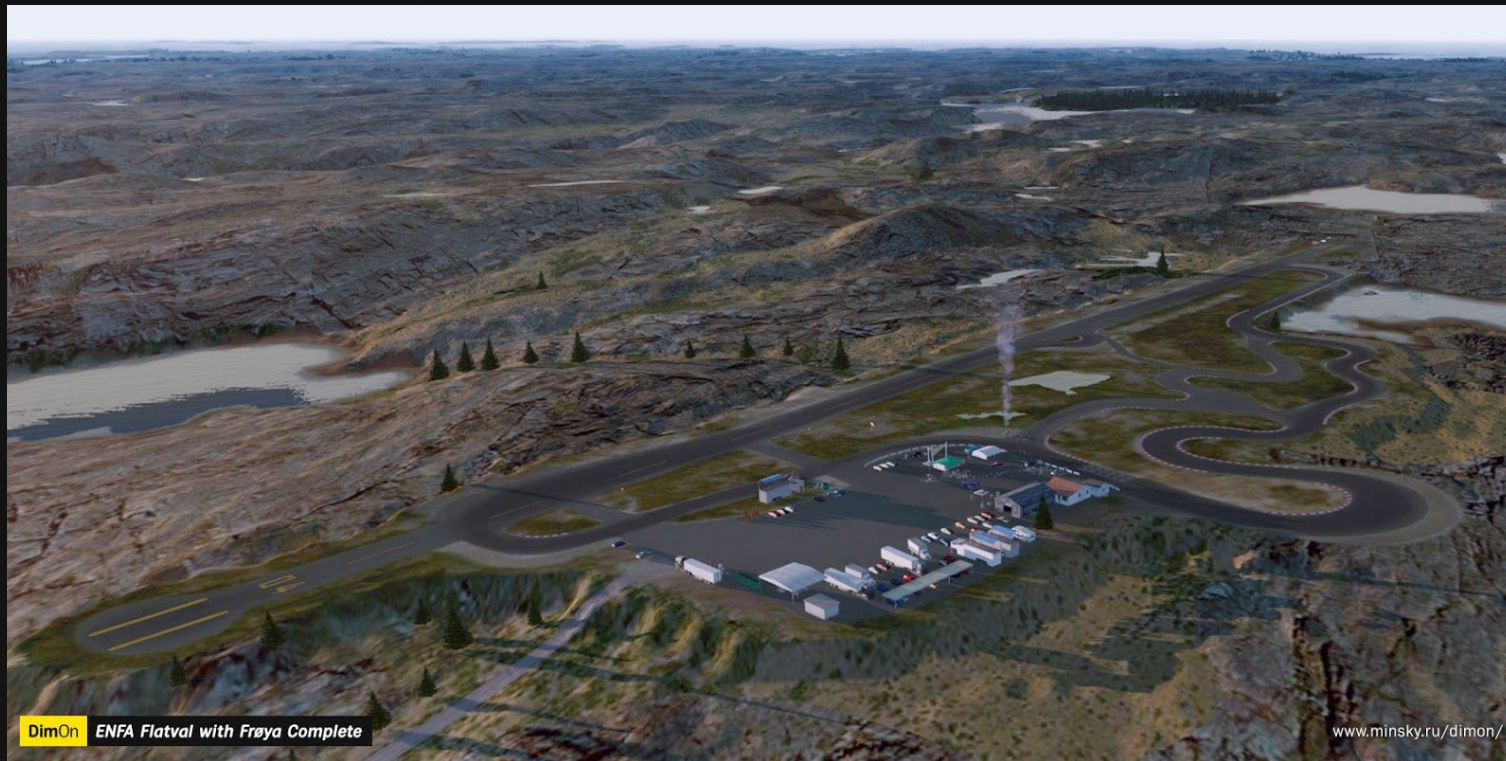
CONTACTS AND COPYRIGHTS

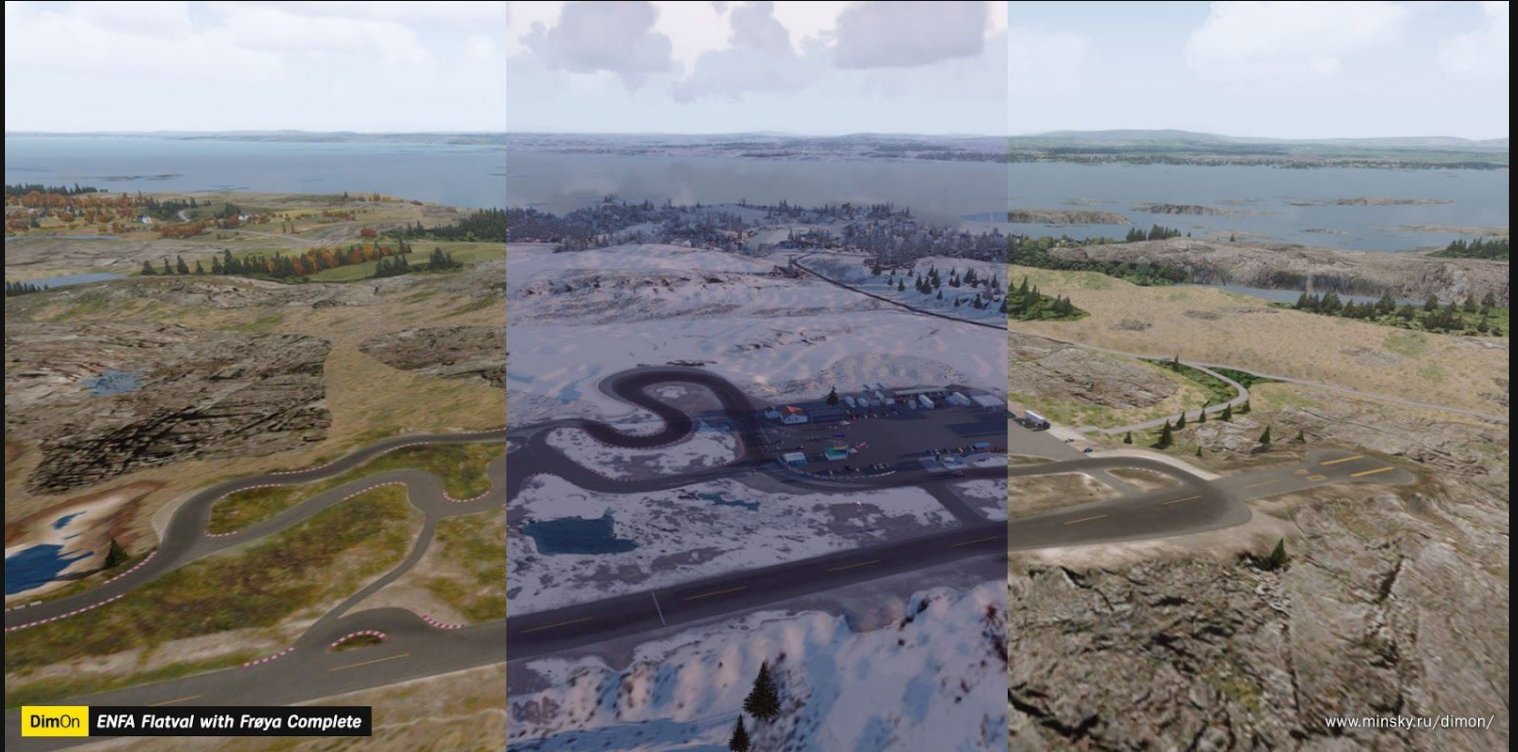
Created by DimOn / Dmitriy Kozyrev

Contact info, latest updates and other scenery are available at:

www.minsky.ru/dimon/

You may share and reupload this scenery without asking permission, but it must remain freeware, and be distributed "as is", including my authorship and contact information.











DimOn ENFA Flatval with Frøya Complete

www.minsky.ru/dimon/



DimOn ENFA Flatval with Frøya Complete

www.minsky.ru/dimon/

