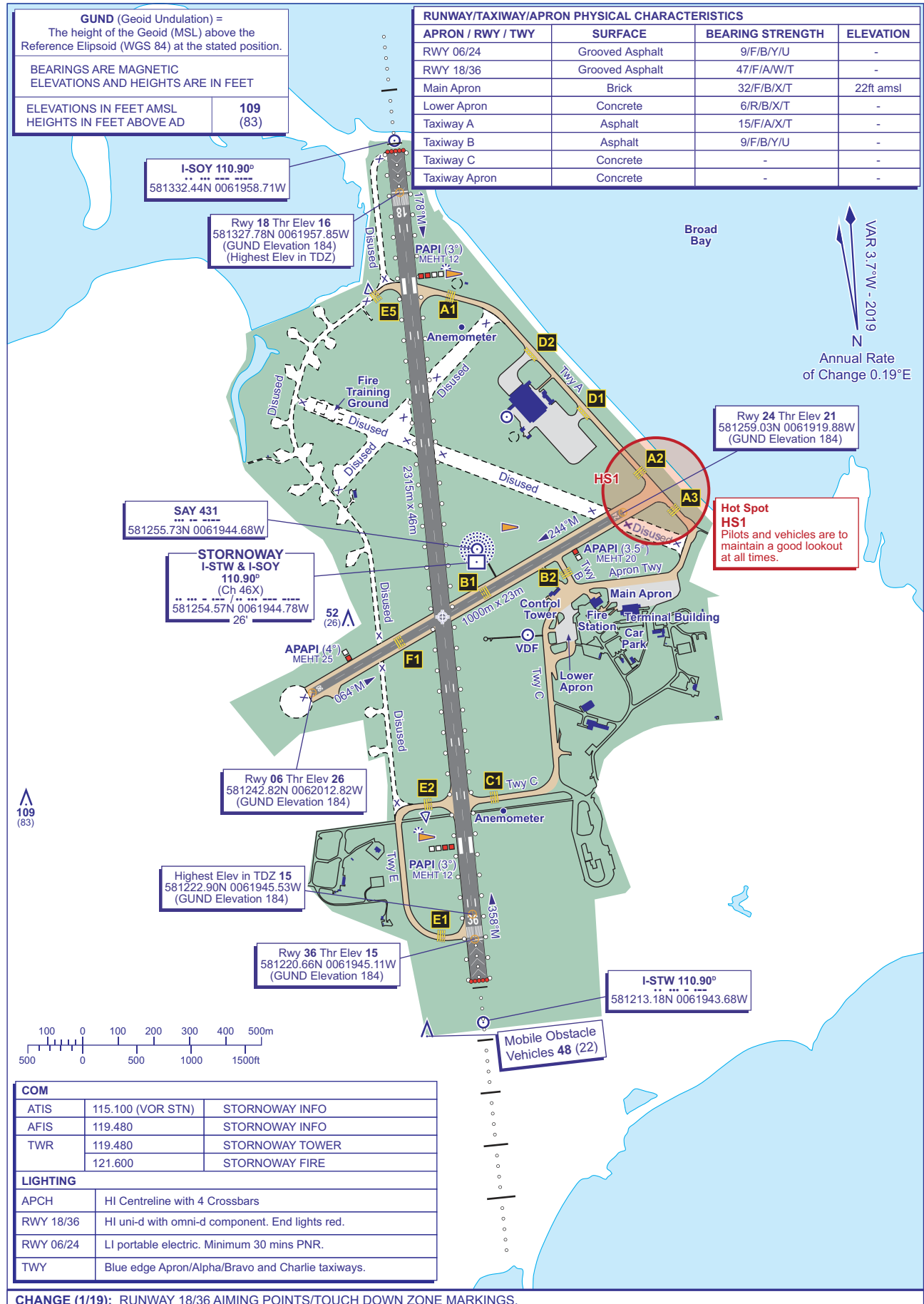


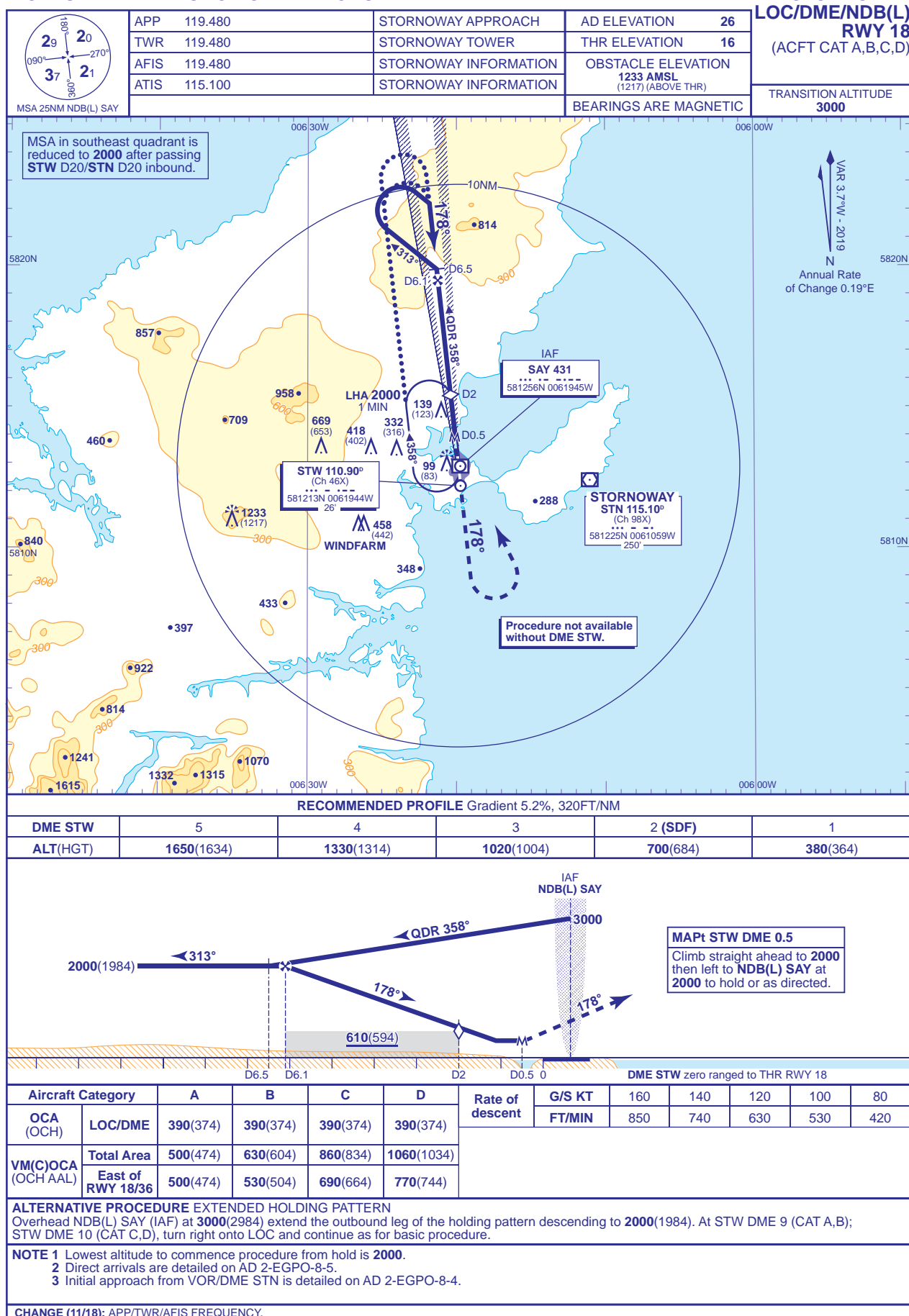
AERODROME
CHART - ICAO

ARP 581256N 0061952W

AD ELEV 26FT

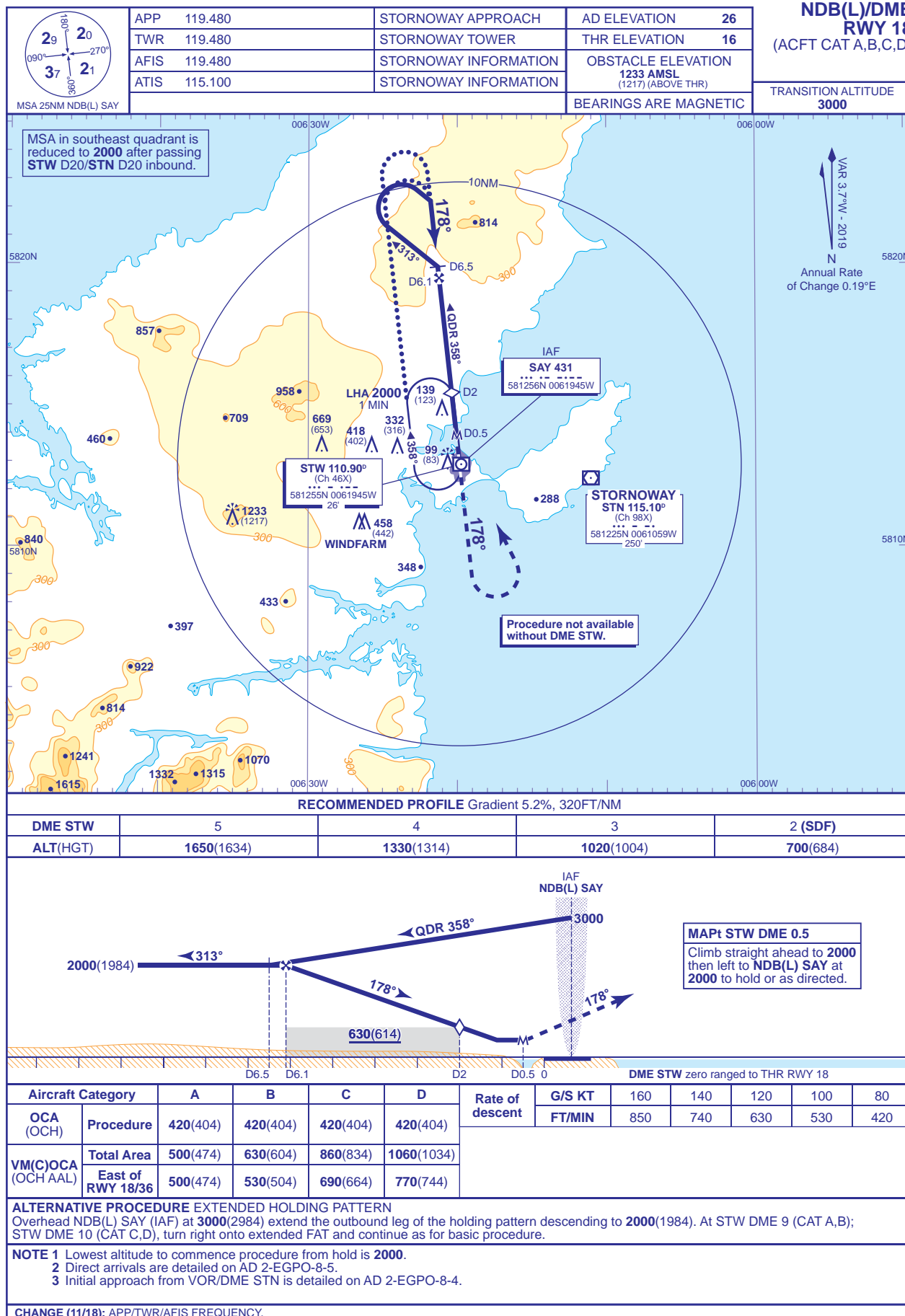
STORNOWAY
EGPO

INSTRUMENT APPROACH CHART - ICAO



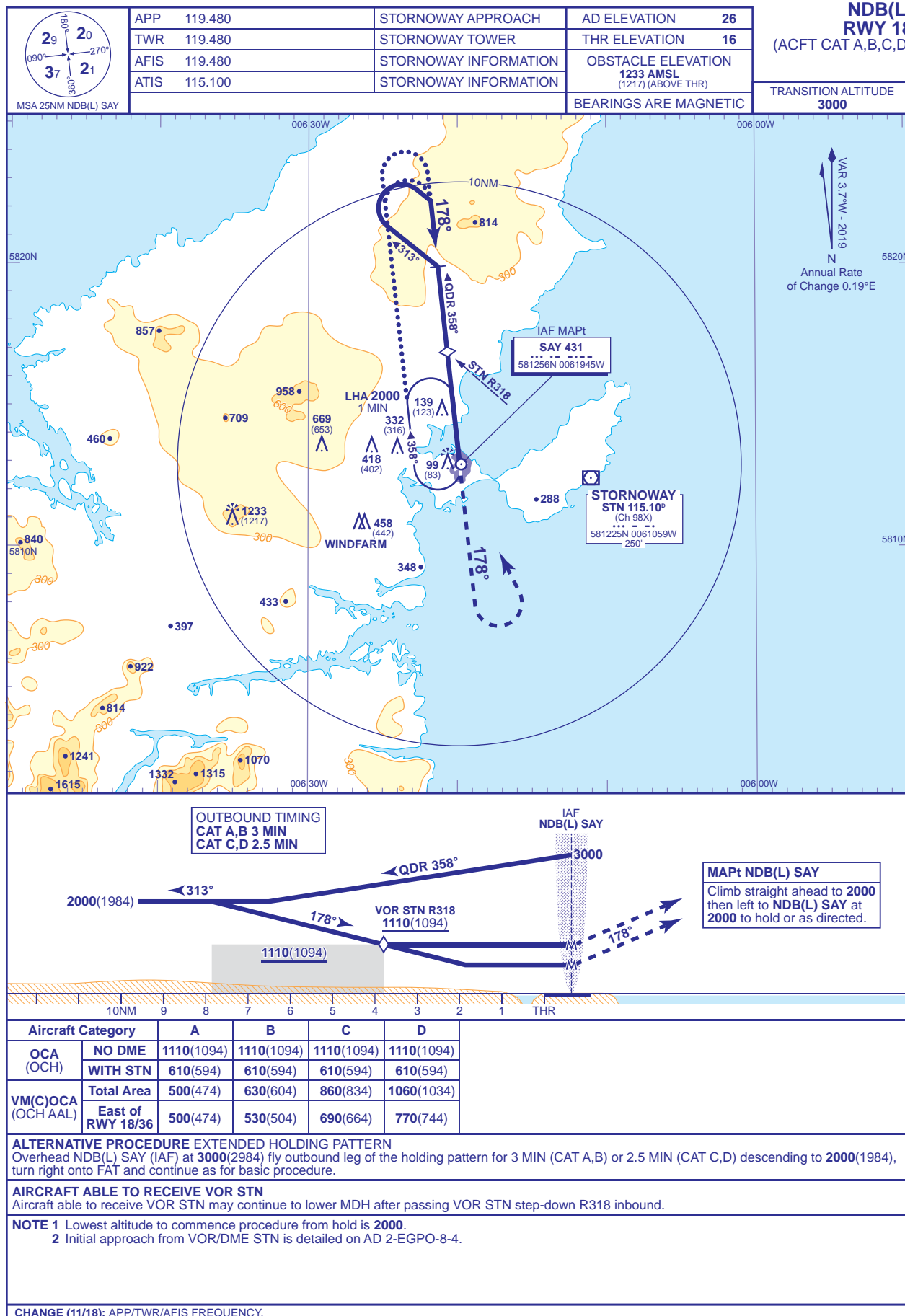
INSTRUMENT APPROACH CHART - ICAO

STORNOWAY
NDB(L)/DME
RWY 18
 (ACFT CAT A,B,C,D)



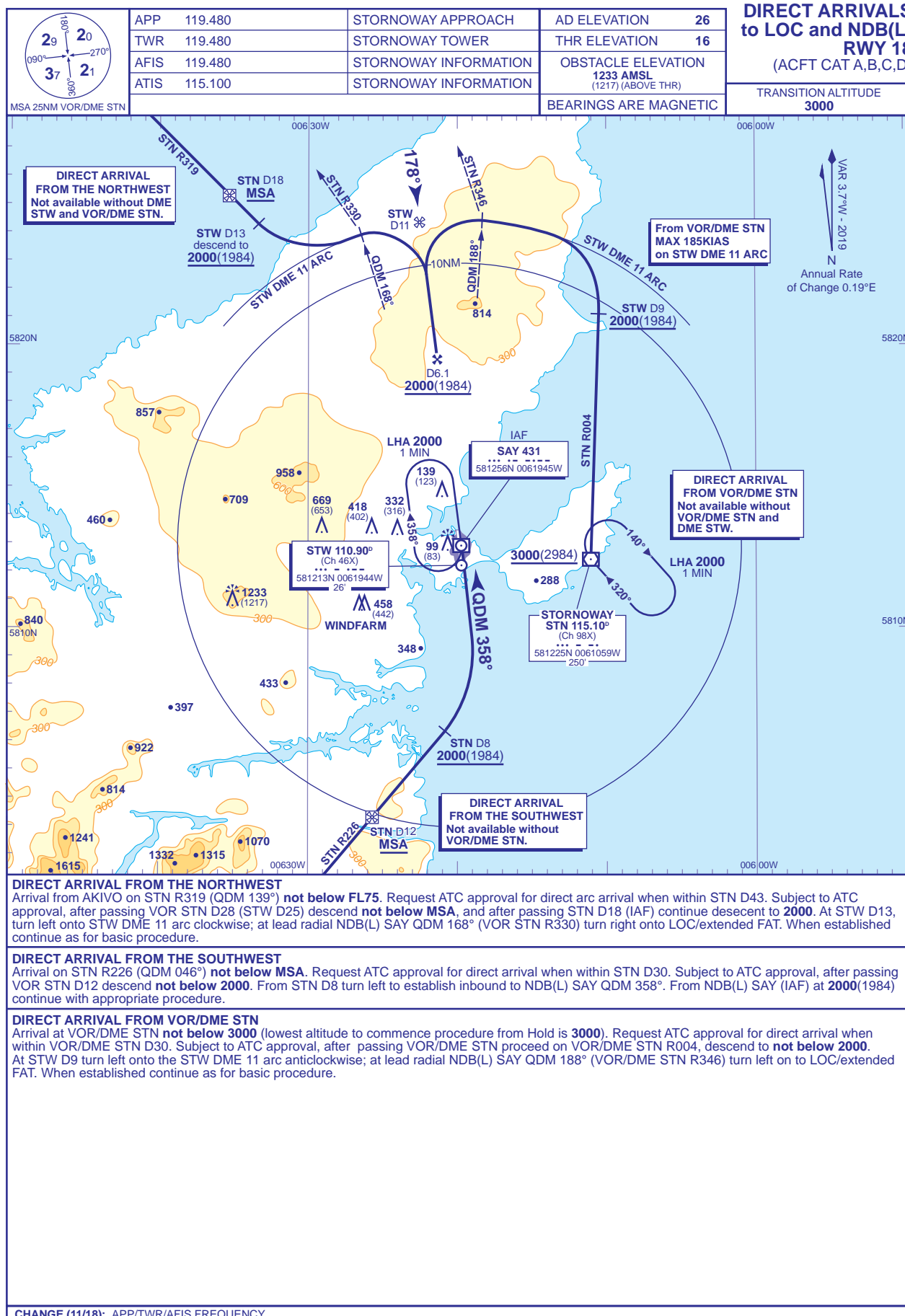
INSTRUMENT APPROACH CHART - ICAO

STORNOWAY
NDB(L)
RWY 18
(ACFT CAT A,B,C,D)



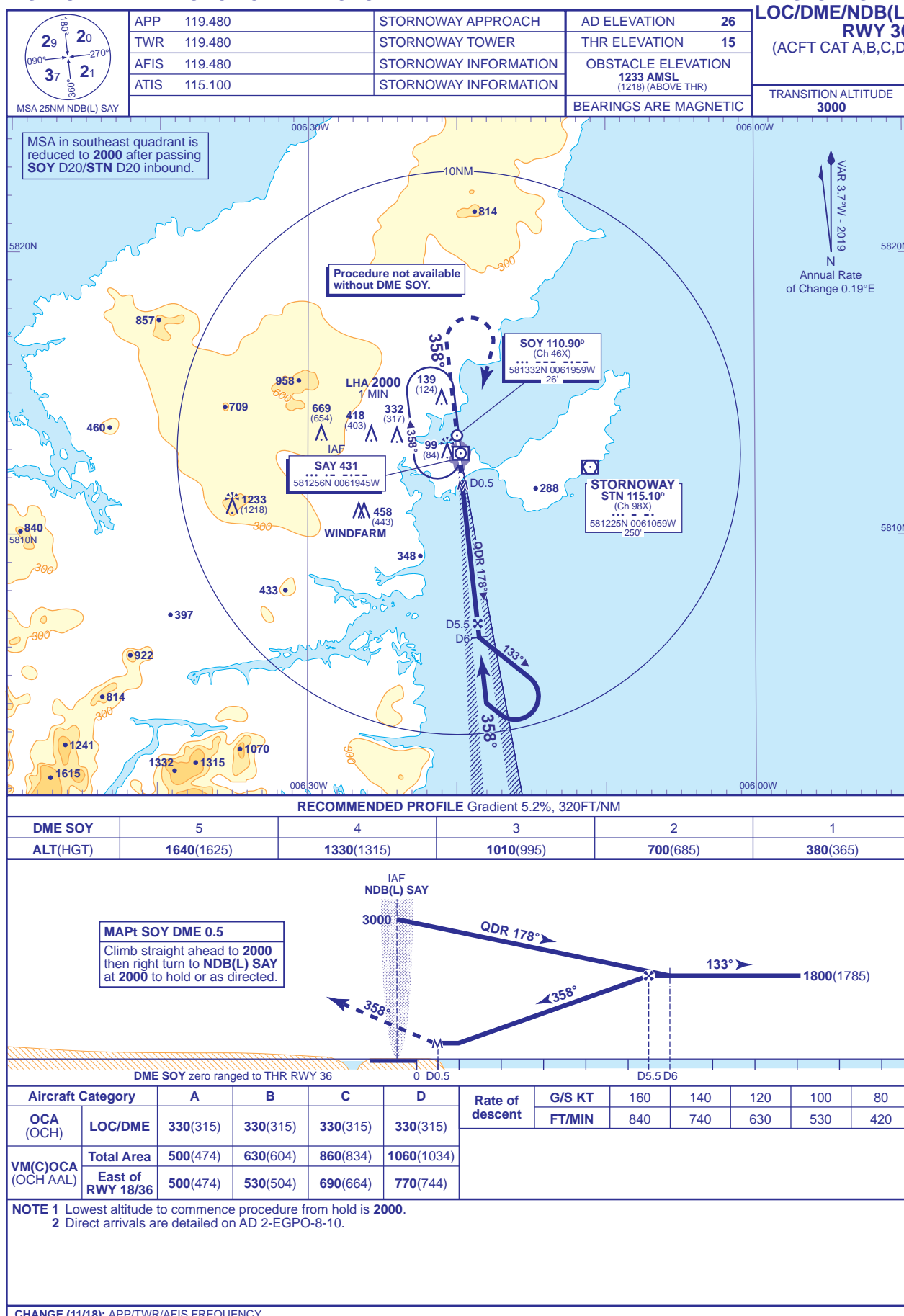
AERO INFO DATE 16 JUL 18

INSTRUMENT APPROACH CHART - ICAO



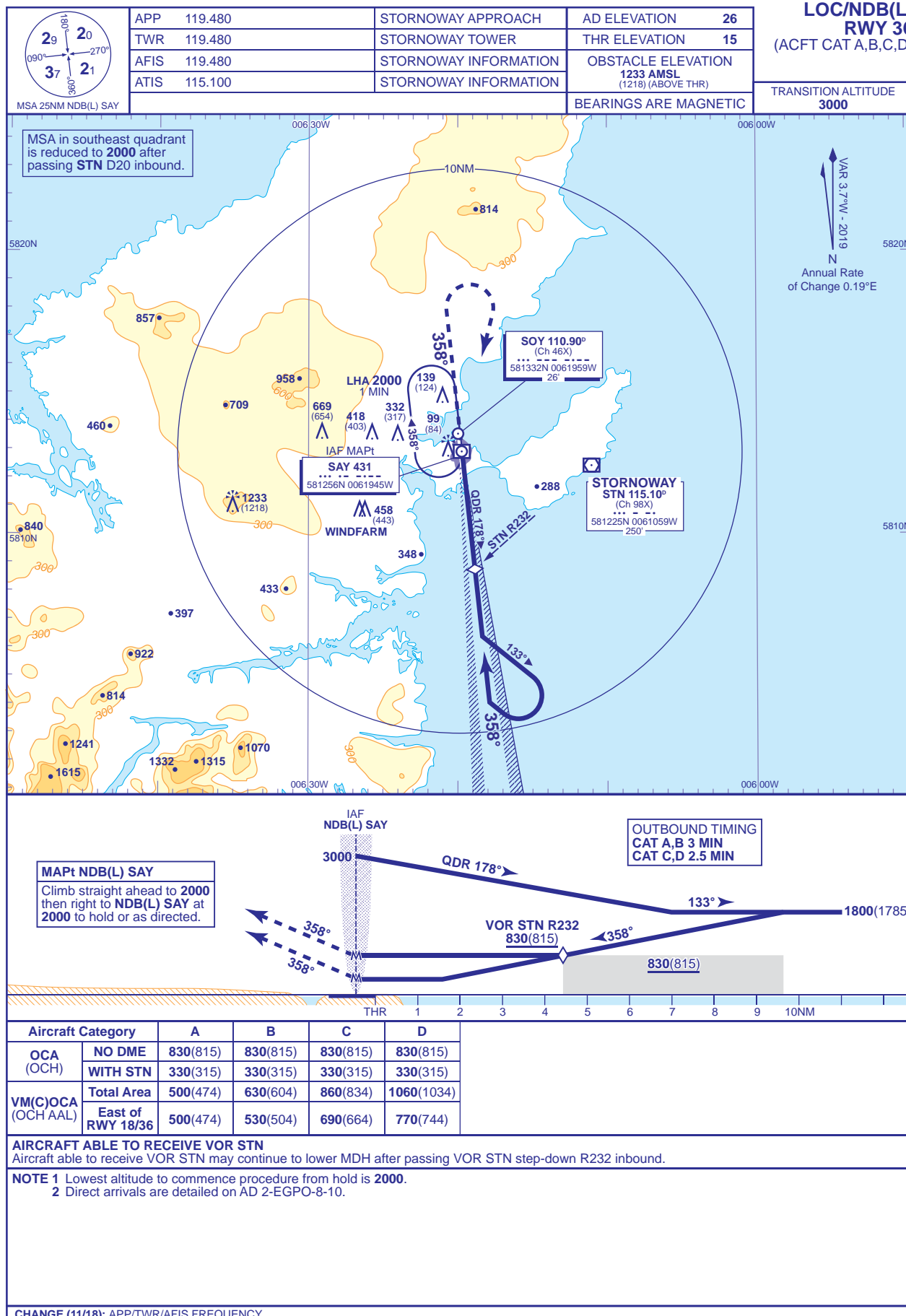
AERO INFO DATE 02 JUL 18

STORNOWAY
LOC/DME/NDB(L)
RWY 36
(ACFT CAT A,B,C,D)

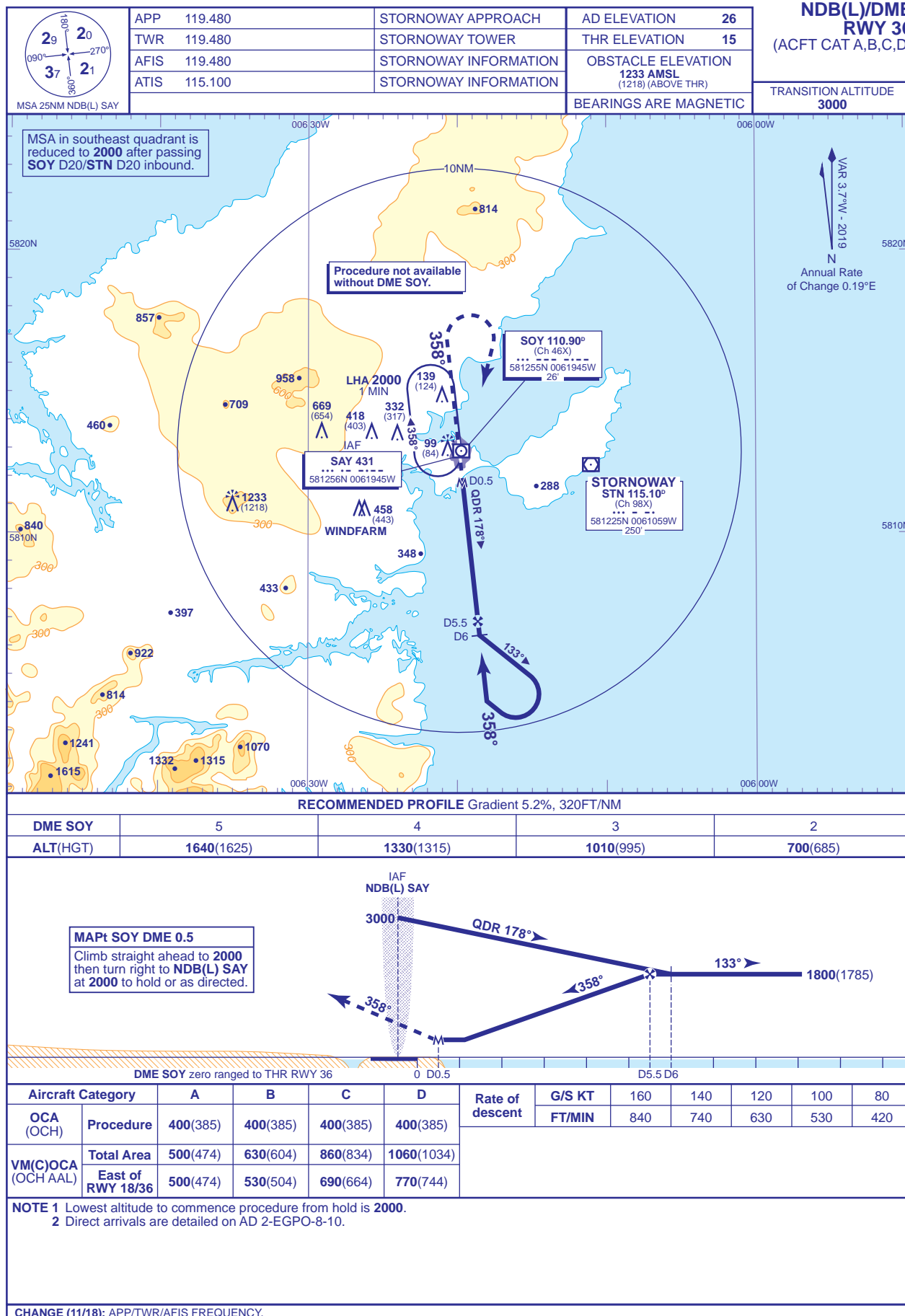


INSTRUMENT APPROACH CHART - ICAO

STORNOWAY
LOC/NDB(L)
RWY 36
 (ACFT CAT A,B,C,D)

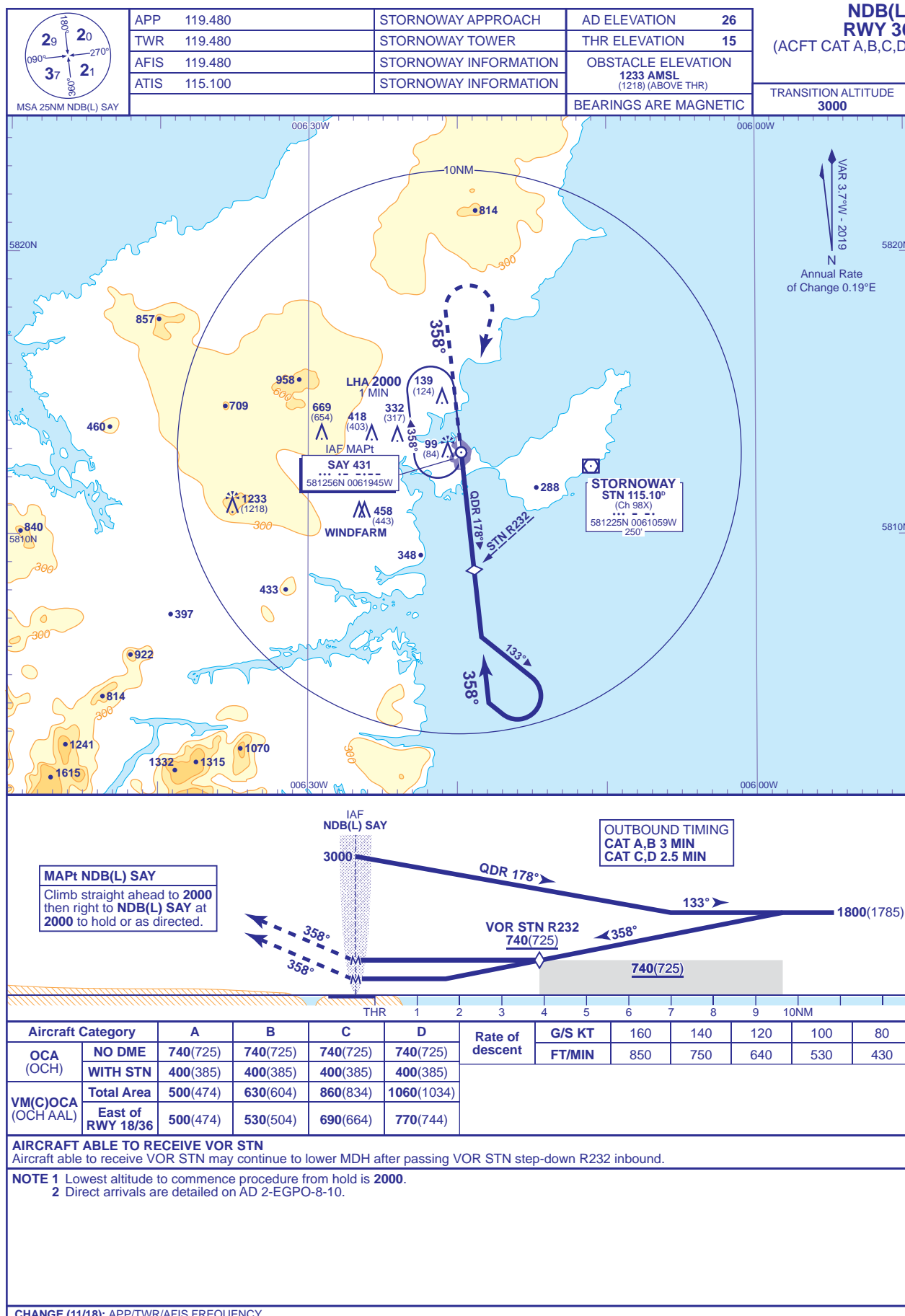


INSTRUMENT APPROACH CHART - ICAO

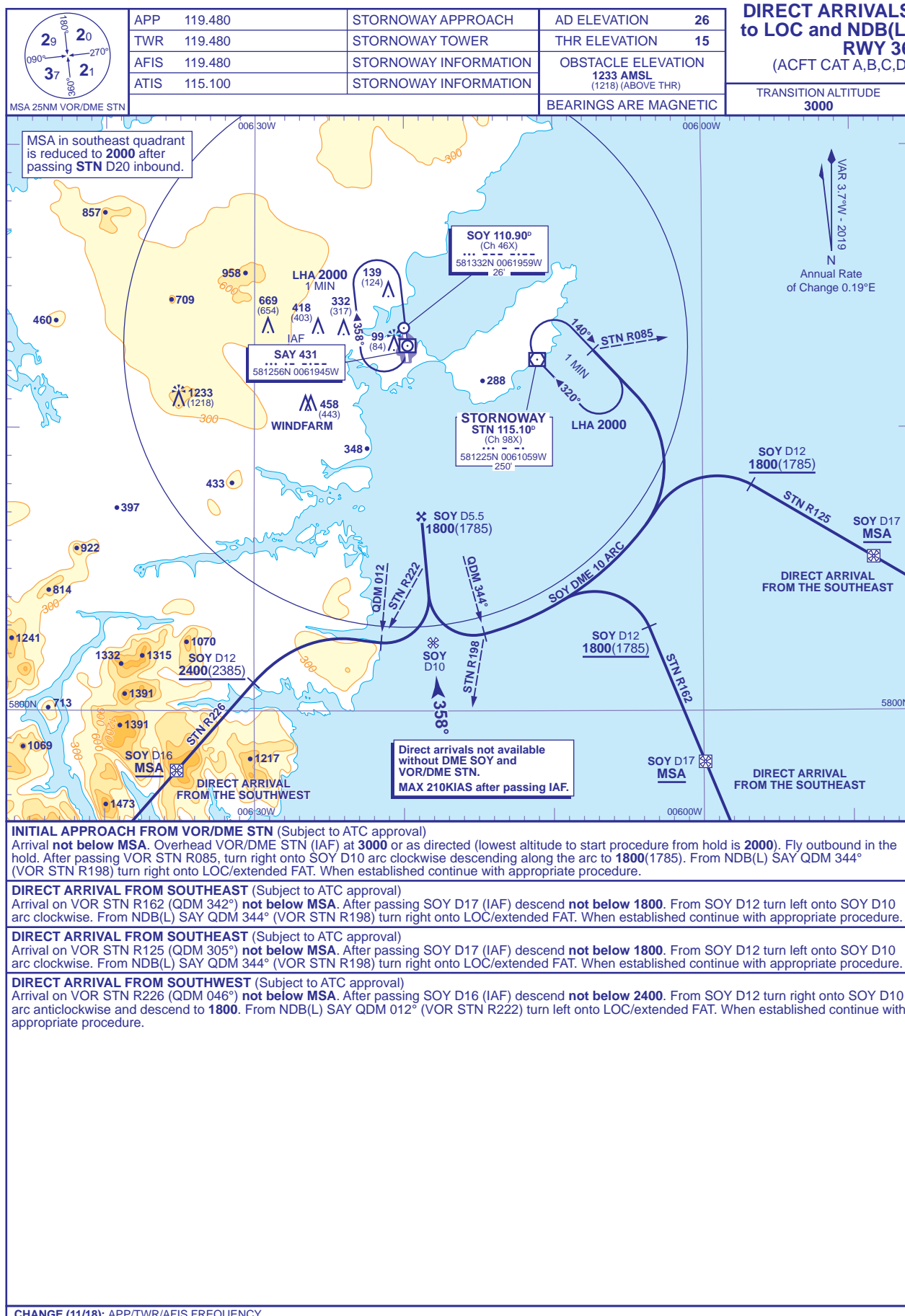
STORNOWAY
NDB(L)/DME
RWY 36
(ACFT CAT A,B,C,D)

INSTRUMENT APPROACH CHART - ICAO

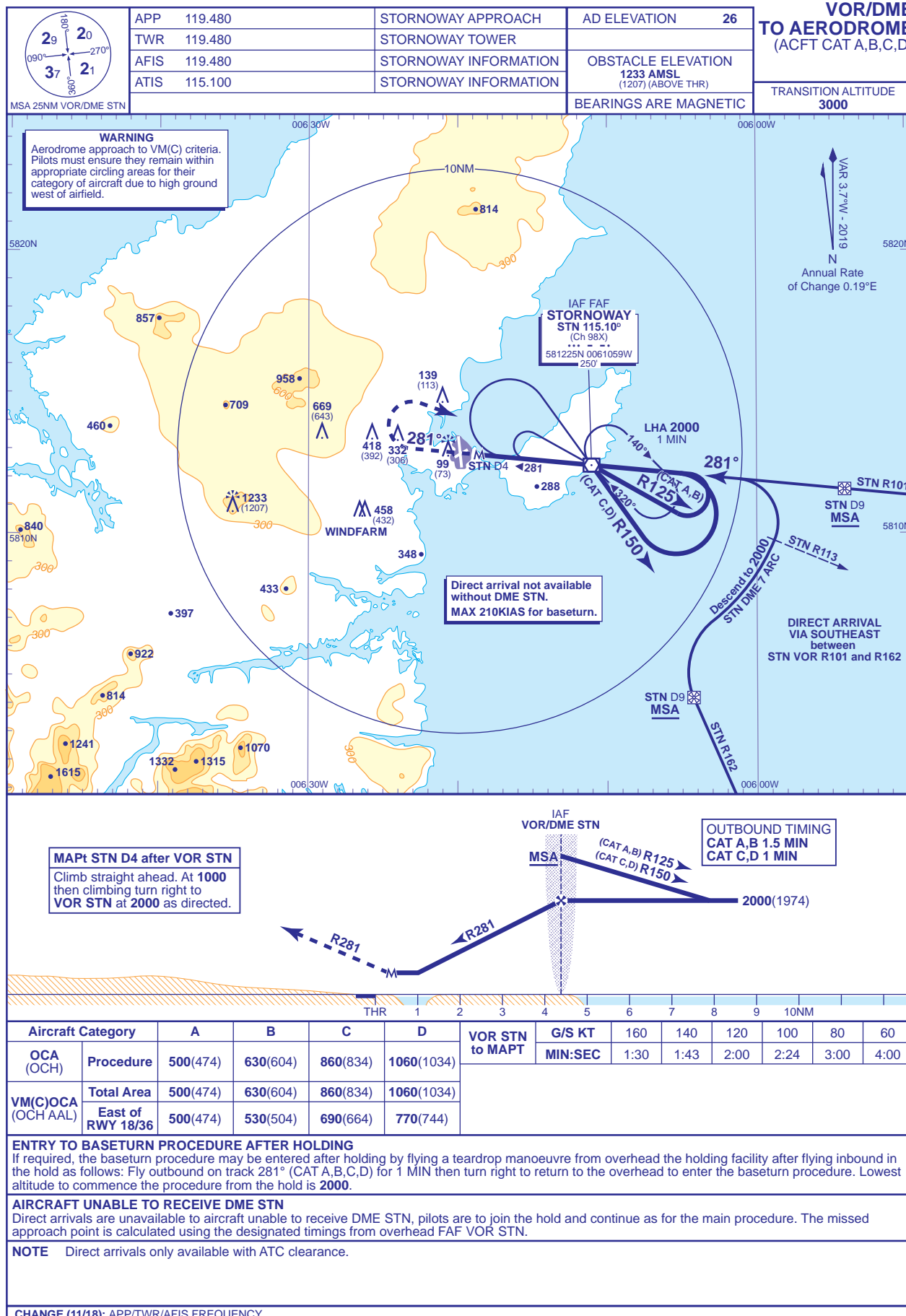
STORNOWAY
NDB(L)
RWY 36
(ACFT CAT A,B,C,D)



INSTRUMENT APPROACH CHART - ICAO



INSTRUMENT APPROACH CHART - ICAO

STORNOWAY
VOR/DME
TO AERODROME
(ACFT CAT A,B,C,D)

EGPO — STORNOWAY**EGPO AD 2.1 AERODROME LOCATION INDICATOR AND NAME**

EGPO — STORNOWAY

EGPO AD 2.2 AERODROME GEOGRAPHICAL AND ADMINISTRATIVE DATA

1	ARP coordinates and site at AD	Lat: 581256N Long: 0061952W
2	Direction and distance from city	2 NM E of Stornoway.
3	Elevation / Reference temperature	26 FT / 14 °C
4	Geoid undulation at AD ELEV PSN	184 FT
5	Magnetic Variation / Annual Change	3.65°W (2019) / 0.19°E
6	AD Administration Address Telephone Telefax	HIAL Stornoway Aerodrome, Isle of Lewis, HS2 0BN. 01851-702256 (Airport Switchboard) 01851-707444 (ATIS) 01851-703026 (Fuel - Air BP) 01851-707402 (ATC) 01851-707401 (Admin)
7	Type of Traffic permitted (IFR/VFR)	IFR/VFR
8	Remarks	

EGPO AD 2.3 OPERATIONAL HOURS

1	AD Administration	Mon-Fri 0700-1945 (0600-1845); Sat 0700-1515 (0600-1415); Sun 1230-1730 (1130-1630); and by arrangement with AD operator (HIAL).
2	Customs and immigration	Departures direct to an EU destination, no notice required. Arrivals direct from EU, 4 hours notice required. Departures and arrivals from Channel Islands, 12 hours notice required. Departures and arrivals from all other non EU Airports, 48 hours notice.
3	Health and sanitation	
4	AIS Briefing Office	
5	ATS Reporting Office (ARO)	
6	MET Briefing Office	
7	ATS	See AD 2.18.
8	Fuelling	By arrangement with Air BP.
9	Handling	By arrangement with HIAL, Tel: 01851-702256; e-mail: Stornatc@hial.co.uk; or Loganair, Tel: 01851-703673.
10	Security	As AD hours.
11	De-icing	Operational hours.
12	Remarks	This aerodrome is PPR. Filing of a Flight Plan does NOT constitute PPR. To cover the possibility of an aircraft which departs within 15 minutes of normal closing time having to return, the Aerodrome will normally retain sufficient services and equipment for 15 minutes after the time of actual departure.

EGPO AD 2.4 HANDLING SERVICES AND FACILITIES

1	Cargo handling facilities	By arrangement with Loganair, Tel: 01851-703673
2	Fuel and oil types	AVGAS JET A-1, AVGAS 100LL.
3	Fuelling facilities/capacity	Bowser delivery. Limited stocks of AVGAS 100LL.
4	De-icing facilities	By arrangement with Loganair, Tel: 01851-703673, email syycs@loganair.co.uk and jeanettemackay@loganair.co.uk
5	Hangar space for visiting aircraft	Yes by arrangement with AD operator (HIAL).
6	Repair facilities for visiting aircraft	
7	Remarks	By arrangement with Loganair, Tel: 01851-703673, email syycs@loganair.co.uk and Jeanettemackay@loganair.co.uk HIAL, Tel: 01851-707415, email stornatc@hial.co.uk

EGPO AD 2.5 PASSENGER FACILITIES

1	Hotels	Hotels and B & B in vicinity.
2	Restaurants	Cafe in Terminal.
3	Transportation	Taxis, Car hire and Buses.
4	Medical facilities	Limited first aid. Medical services contactable.
5	Bank and Post Office	
6	Tourist Office	
7	Remarks	Ambulift and wheelchair facilities are available upon request.

EGPO AD 2.6 RESCUE AND FIRE FIGHTING SERVICES

1	AD category for fire fighting services	RFF Category A4 RFF Category 5 accepted under remission. RFF Category 6 by prior arrangement.
2	Rescue equipment	Difficult environs rescue craft. Water rescue facilities are available for Runways 18/36 and 06/24 during published opening hours and special/on call openings, subject to serviceability of equipment and times when the weather conditions and sea state are conducive to such rescue operations.
3	Capability for removal of disabled aircraft	Limited.
4	Remarks	

EGPO AD 2.7 SEASONAL AVAILABILITY - CLEARING

1	Type of clearing equipment	Mechanical, chemical de-icing.
2	Clearance priorities	Runway 18/36. Runway 06 to Taxiway Bravo. Taxiways. Aprons. Runway 06/24. Domestic Area.
3	Remarks	For latest information telephone ATC.

EGPO AD 2.8 APRONS, TAXIWAYS AND CHECK LOCATIONS/POSITIONS DATA

1	Apron surface and strength	LOWER APRON Surface: Concrete PCN 6/R/B/X/T MAIN APRON Surface: Brick PCN 32/F/B/X/T
2	Taxiway width, surface and strength	Taxiway ALPHA: 15 M Surface: Asphalt PCN 15/F/A/X/T Taxiway APRON: 15 M Surface: Concrete Taxiway BRAVO: 15 M Surface: Asphalt PCN 9/F/B/Y/U Taxiway CHARLIE: 15 M Surface: Concrete
3	Altimeter checkpoint location and elevation	Main Apron 22 FT
4	VOR checkpoints	
5	INS checkpoints	
6	Remarks	

EGPO AD 2.9 SURFACE MOVEMENT GUIDANCE AND CONTROL SYSTEM AND MARKINGS

1	Use of aircraft stand ID signs, TWY guide lines and visual docking/parking guidance system of aircraft stands	Marshalling provided for all stands.
2	Runway and taxiway markings and lighting	Runway marking aid(s): 06/24: Runway designators and centre-line markings. Yellow lead on/off lines to all runways. 18/36: Runway designators and centre-line markings. Edge lines, TDZ markings on Runway 18/36. Yellow lead on/off lines to all runways. Taxiway marking aid(s): Yellow centre-line markings. Taxi holding point markings.
3	Stop bars	A1, B1, C1, F1
4	Remarks	2 illuminated wind direction indicators

EGPO AD 2.10 AERODROME OBSTACLES

In Approach/Take-off areas						
Obstacle ID/ Designation	Obstacle Type	Obstacle Position	Elevation/Height		Obstruction Lighting Type/ Colour	Remarks
1	2	3	4		5	6
36/APPROACH 18/TAKE-OFF	Vehicles	581212.26N 0061943.98W	38 FT		No	
36/APPROACH 18/TAKE-OFF	Vehicles	581211.68N 0061953.34W	48 FT		No	

In circling area and at aerodrome						
Obstacle ID/ Designation	Obstacle Type	Obstacle Position	Elevation/Height		Obstruction Lighting Type/ Colour	Remarks
1	2	3	4		5	6
	Mast	581323.09N 0062905.52W	666 FT		No	
	Mast	581322.19N 0062543.63W	418 FT		No	
	Monument	581318.72N 0062401.19W	332 FT		No	
	NDB	581255.73N 0061944.69W	44 FT		Yes	
	Building	581249.15N 0062006.90W	52 FT		No	
	DF Aerial	581247.96N 0061936.05W	27 FT		Yes	
	Buildings	581233.05N 0062101.96W	109 FT		No	
	Hill	580918.64N 0062226.96W	348 FT		No	

EGPO AD 2.11 METEOROLOGICAL INFORMATION PROVIDED

1	Associated MET Office	MET OFFICE ABERDEEN
2	Hours of service MET Office outside hour	H24
3	Office responsible for TAF preparation Periods of validity	MET OFFICE ABERDEEN 9 hours
4	Trend forecast Interval of issuance	
5	Briefing/consultation provided	Self briefing provided by ATS.

19 Jul 2018

6	Flight documentation Language(s) used	Charts abbreviated plain language text. TAFs/METARs. English
7	Charts and other information available for briefing or consultation	Available on request from ATC.
8	Supplementary equipment available for providing information	Tel: ATIS (01851-707444 – H24).
9	ATS units provided with information	STORNOWAY
10	Additional information (limitation of service, etc.)	Outside aerodrome hours unverified automatic observations via ATIS on the telephone (see item 8).

EGPO AD 2.12 RUNWAY PHYSICAL CHARACTERISTICS

Designations RWY Number	True bearing	Dimensions of RWY	Surface of RWY/ SWY/ Strength (PCN)	THR co-ordinates/ THR Geoid undulation	THR elevation/ Highest elevation of TDZ of precision APP RWY	Slope of RWY/ SWY
1	2	3	4	5	6	7
06	059.87°	1000 x 23 M	RWY surface: Asphalt PCN 9/F/B/Y/U	581242.81N 0062012.82W 184 FT	THR 26 FT	
24	239.88°	1000 x 23 M	RWY surface: Asphalt PCN 9/F/B/Y/U	581259.02N 0061919.88W 184 FT	THR 21 FT	
18	174.28°	2315 x 46 M	RWY surface: Asphalt, Grooved PCN 47/F/A/W/T	581327.78N 0061957.85W 184 FT	THR 16 FT	
36	354.28°	2315 x 46 M	RWY surface: Asphalt, Grooved PCN 47/F/A/W/T	581220.66N 0061945.11W 184 FT	THR 15 FT	

SWY Dimensions	Clearway Dimensions	Strip Dimensions	RESA Dimensions, Overshoot / Undershoot	Location/ description of arresting system	OFZ	Remarks
8	9	10	11	12	13	14
						RWY 06
						RWY 24
						RWY 18
						Threshold displaced by 120 M.
						RWY 36
						The 120 M of asphalt south of Runway 36 threshold is unfit for use by aircraft.

EGPO AD 2.13 DECLARED DISTANCES

Runway designator	TORA	TODA	ASDA	LDA	Remarks
1	2	3	4	5	6
18	2080 M	2230 M	2080 M	2080 M	
36	2080 M	2230 M	2080 M	2080 M	
18	1734 M	1884 M	1734 M		Take off from Intersection with A1
18	868 M	1018 M	868 M		Takeoff from Intersection with RW06/24
36	1658 M	1808 M	1658 M		Take off from Intersection with C1
36	1122 M	1272 M	1122 M		Take off from Intersection with RW06/24
06	1000 M	1150 M	1000 M	1000 M	
24	1000 M	1150 M	1000 M	1000 M	

EGPO AD 2.14 APPROACH AND RUNWAY LIGHTING

RWY	Approach lighting Type/ Length/ Intensity	Threshold lighting Colour/Wing bars	VASIS/ MEHT/ PAPI/ PAPI Dist from THR	TDZ, lighting Length	Runway Centre Line lighting Length/ Spacing/ Colour/ Intensity	Runway edge lighting Length/ Spacing/ Colour/ Intensity	Runway end lighting Colour/ Wing bars	Stopway lighting Length/ Colour	Remarks
1	2	3	4	5	6	7	8	9	10
06		Green Light intensity low Portable electric green wingbars. Portable LI electric lights are available for use on Runway 06/24 as edge, threshold wingbar and stop end lighting. Minimum 30 minutes prior notification required in order to deploy lighting.	APAPI Left/4° 25 FT 134.5 M			Portable electric gauge 24 M Light intensity low	Portable electric Red Light intensity low		
24		Green Light intensity low Portable electric green wingbars. Portable LI electric lights are available for use on Runway 06/24 as edge, threshold wingbar and stop end lighting. Minimum 30 minutes prior notification required in order to deploy lighting.	APAPI Left/3.5° 20 FT 135.5 M			Portable electric gauge 24 M Light intensity low	Portable electric Red Light intensity low		
18	Centre-line with two crossbars. Light intensity high	Light intensity high Green wingbars	PAPI Left/3° 64 FT 396 M			Uni bi-directional with omni-directional component. Gauge 54 M. White with final 600 M yellow. Light intensity high	Red		

RWY	Approach lighting Type/Length/Intensity	Threshold lighting Colour/Wing bars	VASIS/ MEHT/ PAPI/ PAPI Dist from THR	TDZ, lighting Length	Runway Centre Line lighting Length/ Spacing/ Colour/ Intensity	Runway edge lighting Length/ Spacing/ Colour/ Intensity	Runway end lighting Colour/ Wing bars	Stopway lighting Length/ Colour	Remarks
1	2	3	4	5	6	7	8	9	10
36	Centre-line with four crossbars. Light intensity high	Light intensity high Green wingbars	PAPI Left/3° 38 FT 240 M			Uni bi-directional with omni-directional component. Gauge 54 M. White with final 600 M yellow. Light intensity high	Red		

EGPO AD 2.15 OTHER LIGHTING, SECONDARY POWER SUPPLY

1	ABN/IBN location, characteristics and hours of operation	
2	LDI location and lighting Anemometer location and lighting	
3	TWY edge and centre line lighting	EDGE: Blue edge Apron/Taxiway Alpha, Bravo and Charlie.
4	Secondary power supply/switch-over time	Standby generator/15 seconds.
5	Remarks	Apron Floodlighting. Obstacle lighting.

EGPO AD 2.16 HELICOPTER LANDING AREA

INTENTIONALLY BLANK

EGPO AD 2.17 AIR TRAFFIC SERVICES AIRSPACE

Designation and lateral limits	Vertical Limits	Airspace Class	ATS unit callsign/ language	Transition Altitude	Hours of applicability	Remarks
1	2	3	4	5	6	7
STORNOWAY ATZ A circle, 2.5 NM radius, centred at 581256N 0061952W on longest notified runway (18/36)	Upper limit: 2000 FT Lower limit: SFC	G	STORNOWAY APPROACH English	3000 FT		ATZ may be re-activated at short notice, at any time, for air ambulance, SAR or emergency traffic. Pilots are advised to regard the ATZ as permanently active and to call and listen out on RTF.

EGPO AD 2.18 AIR TRAFFIC SERVICES COMMUNICATION FACILITIES

Service Designation	Callsign	Channel(s)	SATVOICE number(s)	Logon Address	Hours of Operation	Remarks
1	2	3	4	5	6	7
APP	STORNOWAY APPROACH	119.480 MHz DOC 50 NM/ 15,000 FT.			Mon-Fri 0700-1945 (0600-1845); Sat 0700-1515 (0600-1415); Sun 1230-1730 (1130-1630).	ATZ hours coincident with Approach hours. VDF 581247.96N 0061936.05W
TWR	STORNOWAY TOWER	119.480 MHz			Mon-Fri 0700-1945 (0600-1845); Sat 0700-1515 (0600-1415); Sun 1230-1730 (1130-1630).	VDF 581247.96N 0061936.05W

Service Designation	Callsign	Channel(s)	SATVOICE number(s)	Logon Address	Hours of Operation	Remarks
1	2	3	4	5	6	7
AFIS	STORNOWAY INFORMATION	119.480 MHz			By arrangement outside hours of ATC - Normally only available for SAR and Ambulance flights and aircraft in an emergency	VDF 581247.96N 0061936.05W Due to AFISO training and maintenance of currency, AFISO phraseology may be in use during ATC published hours, with ATC in attendance. ATC service will remain available at all times. Pilots will be advised of periods of AFISO training, normally via ATIS.
ATIS	STORNOWAY INFORMATION	115.100 MHz Frequency shared with VOR STN.			Mon-Fri 0700-1945 (0600-1845); Sat 0700-1515 (0600-1415); Sun 1230-1730 (1130-1630).	
OTHER	STORNOWAY FIRE CHIEF	121.600 MHz Non-ATS frequency.			Available when Fire vehicle attending aircraft on the ground in an emergency.	

EGPO AD 2.19 RADIO NAVIGATION AND LANDING AIDS

Type of Aid CAT of ILS/MLS (For VOR/ILS/MLS, give VAR)	Ident	Frequency	Hours of Operation	Position of transmitting antenna coordinates	Elevation of DME transmitting antenna	Remarks
1	2	3	4	5	6	7
ILS/LLZ NOCAT 3.65°W (2019)	STW	110.900 MHz	Mon-Fri 0700-1945 (0600-1845); Sat 0700-1515 (0600-1415); Sun 1230-1730 (1130-1630).	581213.17N 0061943.68W		(RWY 18) Hours of Operation as APP/TWR. See latest NOTAM for details.
ILS/LLZ NOCAT 3.65°W (2019)	SOY	110.900 MHz	Mon-Fri 0700-1945 (0600-1845); Sat 0700-1515 (0600-1415); Sun 1230-1730 (1130-1630).	581332.44N 0061958.71W		(RWY 36)
VOR/DME 3.58°W (2019) 3.7°W (2017)	STN	98X 115.100 MHz	H24 Mon-Fri 0700-1945 (0600-1845); Sat 0700-1515 (0600-1415); Sun 1230-1730 (1130-1630).	581225.01N 0061058.97W	250 FT	L and VOR/DME available for approach and landing purposes only during the hours of APP.

Type of Aid CAT of ILS/MLS (For VOR/ILS/MLS, give VAR)	Ident	Frequency	Hours of Operation	Position of transmitting antenna coordinates	Elevation of DME transmitting antenna	Remarks
1	2	3	4	5	6	7
NDB (L) 3.65°W (2019)	SAY	431.000 kHz	Mon-Fri 0700-1945 (0600- 1845); Sat 0700-1515 (0600- 1415); Sun 1230-1730 (1130- 1630).	581255.73N 0061944.68W		On AD. Range 40 NM. Co-located at DME. Normally radiates H24. L and VOR/DME available for approach and landing purposes only during the hours of APP.
ILS/DME	ISTW	46X 110.900 MHz	Mon-Fri 0700-1945 (0600- 1845); Sat 0700-1515 (0600- 1415); Sun 1230-1730 (1130- 1630).	581254.56N 0061944.77W	26 FT	(RWY 18) On AD. DOC 25 NM/10,000 FT. DME frequency paired with ILS STW and SOY. Zero range is indicated at THR of Runway 18 and 36.
ILS/DME	ISOY	46X 110.900 MHz	Mon-Fri 0700-1945 (0600- 1845); Sat 0700-1515 (0600- 1415); Sun 1230-1730 (1130- 1630).	581254.56N 0061944.77W	26 FT	(RWY 36) On AD. DOC 25 NM/10,000 FT. DME frequency paired with ILS STW and SOY. Zero range is indicated at THR of Runway 18 and 36.

EGPO AD 2.20 LOCAL AERODROME REGULATIONS

1 AIRPORT REGULATIONS

- Use of this airport by aircraft not able to communicate with ATC by radio is strictly PPR.
- Aircraft that do not require the use of a licensed aerodrome and that wish to operate outwith the notified aerodrome hours of operation must comply with Highlands and Islands Airports Limited Out of Hours Indemnity Scheme. Details of the scheme and an application form can be obtained from the HIAL website or HIAL Tel: 01667-462445; Fax 01667-464208.
- Use of Stornoway aerodrome is subject to standard Terms and Conditions of Use, which can be requested from the aerodrome.
- High visibility clothing is to be worn when airside.

2 GROUND MOVEMENT

- Pilots are advised that the width of the Alpha and Charlie taxiways on the East side of the aerodrome is 15 m.
- Pilots are reminded that aircraft using the Main Apron will normally be marshalled. Caution should be exercised when manoeuvring due to the proximity of lighting pylons at the southern edge of the Main apron.
- Pilots should exercise caution when operating in the area north and south of the hangar because of vehicular activity which is not subject to ground movement control.
- All parking is normally under the direction of the marshaller.
- The taxiway to the right of Echo 2 is unusable.
- To permit crossing of the southern taxiway by pedestrians and non-radio equipped vehicles a crossing is established between Taxiway Charlie and the Control Tower Building. During the notified hours of ATC/AFIS this crossing is controlled by traffic lights. The traffic light signal is located above the front door of the Control Tower. Pedestrians and vehicles must not cross the taxiway, in either direction, when this light is red. Outwith the notified hours of ATC/AFIS the traffic light is permanently green however pedestrians/vehicles must exercise extreme caution as aircraft operating out of hours may be using the taxiway. This crossing is not available during LVP operations, ATC will advise.
- Marshalling will be provided at the Marshaller's discretion when the wind speed is in excess of 40 kt.
- When manoeuvring on Runway 18/36 aircraft must not proceed beyond the runway stopend lights. The area beyond is unfit for normal movement of aircraft and is marked as such by yellow chevrons.
- Pilots of aircraft parking on the Lower Apron must report to ATC after parking. Access from the Lower Apron is restricted to the adjacent exit gate and to the ATC building. A walkway (painted green) with painted footprints and signage will guide all Lower Apron users to either the ATC Control Tower building or the exit gate. Crossing the active taxiway to the ATC Control Tower building is controlled by traffic lights situated above the entry door of the Control Tower building. Airside access to the Terminal building from either the Lower Apron or ATC is strictly prohibited and the exit gate adjacent to the Lower Apron must always be used.

To open the pedestrian gate, first press the electrical release switch on the grey cabinet to the left of the gate, then twist the opening handle. Ensure that the gate is securely closed after you pass through. Be advised the access gate is electronically controlled, so when you require access airside you will have to visit the Security Office in the main Terminal who will issue you with a Temporary Airside Pass (don't forget to have your photo ID and hi-visibility jacket with you), they will then escort you airside.

Once airside, hangar access is by request to the marshaller or telephone 01851-707415 (ATC).

- j) High ground to north and west rising to 1000 ft within 7 nm.
- k) Pilots are reminded that Taxiway Alpha, between the apron MET Gate and the Gaydon hangar, is used regularly by vehicular traffic under the control of ATS. Vehicles using this taxiway may be seen by taxiing aircraft using the Apron, Taxiway Bravo and Charlie.

3 CAT II/III OPERATIONS

Not applicable

4 WARNINGS

- a) No ground signals except light signals.
- b) Flocks of geese present in fields adjacent to the aerodrome, all year round.
- c) Birds can be expected on all approaches. Dedicated bird patrols during operational hours under control of ATS. Increased risk from birds at low tide on approach to Runway 18.
- d) Minimum approach angles of 3° (indicated by the PAPI) must be strictly adhered to when using Runway 36 due to vehicles on road within undershoot.
- e) Grass areas are soft and unsafe. Poor load bearing characteristics may be found on runway/taxiway strips and the area adjacent to the apron. Only marked taxiways are to be used. Pilots are warned to exercise caution whilst taxiing between the Main Apron and Alpha 3 as this portion of taxiway includes a compound curve and taxiway centre-line markings must be followed to ensure clearance distances from pavement edge are maintained.
- f) A Coastguard helicopter operates from Stornoway and will be given appropriate priority over other traffic when operating on search and rescue duties. These activities may take place throughout the 24 hour period and pilots using out of hours permission at Stornoway should therefore exercise appropriate caution.
- g) Pilots are reminded that they should not cross the Runway 18 threshold when lining up for departure. The area beyond the Runway 18 threshold and marked with chevrons is for the protection of the Runway 36 Localiser monitor antenna (Lit).

5 HELICOPTER OPERATIONS

- a) Light helicopters are not required to use the runways and may arrive depart from the appropriate apron.
- b) Rotors running refuel is only available with the agreement of the fuelling company and if HIAL are provided with a copy of the Helicopter Operators written instructions to the fuelling company regarding the aircraft, the safety measures and the emergency procedures to be followed in respect of rotors running refuelling. All passengers must disembark before refuelling commences.
- c) Pilots of helicopters engaged in Public Transport Operations are required to provide ATS an ETA/ETD giving at least 10 minutes notice. This may be done via telephone or RTF.
- d) Pilots are reminded that routine helicopter winching training takes place on the Gaydon South Apron and the Gaydon North Apron. S92 helicopters may hover, up to a max of 300 ft agl, with the winch cable attached to a ground weight. These operations are separated for wake turbulence purposes from Runways 18/36 and 06/24. Traffic Information on these operations will be passed by ATS.

6 USE OF RUNWAYS

- a) Runway 06/24 is not available for night landings but is available for use by Air Ambulance and SAR ops on request.
- b) Runway departure restriction for aircraft requiring the use of a licensed aerodrome:
 - i. **Runway 18/36** . Except where an AOC holder has a less restrictive State authorised take-off minima, departures in RVR conditions of less than 400 m are not permitted;
 - ii. **Runway 06/24** . Except where an AOC holder has a less restrictive State authorised take-off minima, departures when the reported MET visibility is 800 m or less are not permitted.
- c) Runway 06/24 is not available for landing or take-off outside of aerodrome opening hours. Aircraft operating outside aerodrome opening hours in accordance with HIAL's Out of Hours Indemnity Scheme must exercise caution when taxiing on the Charlie, Bravo and Alpha Taxiways as vehicles may be operating on those routes.

7 TRAINING

Not applicable

EGPO AD 2.21 NOISE ABATEMENT PROCEDURES

Not applicable

EGPO AD 2.22 FLIGHT PROCEDURES

1 INSTRUMENT APPROACH PROCEDURES

- a) Instrument Approach Procedures (IAP) for this aerodrome are established outside controlled airspace. See ENR 1.5.

2 NORTH ATLANTIC DEPARTURES

- a) Due to the proximity of the Shanwick Oceanic boundary to Stornoway, pilots must consider timescales for requesting Oceanic clearance. Refer to ENR 2.2, subsection 3 for details.
- b) Pilots are reminded that the Oceanic clearance (including level allocation) is valid only from the OCA Entry Point. **Domestic ATC clearance to the OCA Entry point is issued separately.**

3 CIRCUITS

- a) Circuit directions: Runways 18 and 24 - LH; Runways 06 and 36 - RH.

4 AIR TRAFFIC SERVICES OUTSIDE CONTROLLED AIRSPACE

- a) During notified ATC hours of Service, a procedural service will routinely be applied to IFR flights. Pilots will be expected to accept Level, Radial, Track and Time allocations that may require flight in IMC. A basic service will be routinely applied to VFR flights. A pilot may request another service if considered more appropriate.
- b) Outside notified ATC hours of service, a basic service will always be applied to SAR and ambulance flights by an AFISO.

5 RADIO COMMUNICATION FAILURE PROCEDURES

- a) The pilot of a VFR flight experiencing communications failure should join overhead at 2000 ft and descend into the circuit pattern for the runway in use watching for light signals from the Tower all the while. Should a light signal not be forthcoming on turning onto final approach, the pilot should level off at not below 450 ft and fly parallel to the runway, and adjacent to the Tower, to attract attention.

EGPO AD 2.23 ADDITIONAL INFORMATION

Not applicable

EGPO AD 2.24 CHARTS RELATED TO AN AERODROME

AERODROME CHART - ICAO

AD 2.EGPO-2-1

INSTRUMENT APPROACH CHART LOC/DME/NDB(L) RWY 18 - ICAO

AD 2.EGPO-8-1

INSTRUMENT APPROACH CHART NDB(L)/DME RWY 18 - ICAO

AD 2.EGPO-8-2

INSTRUMENT APPROACH CHART NDB(L) RWY 18 - ICAO

AD 2.EGPO-8-3

INSTRUMENT APPROACH CHART DIRECT ARRIVALS to LOC and NDB(L) RWY 18 - ICAO

AD 2.EGPO-8-4

INSTRUMENT APPROACH CHART LOC/DME/NDB(L) RWY 36 - ICAO

AD 2.EGPO-8-5

INSTRUMENT APPROACH CHART LOC/NDB(L) RWY 36 - ICAO

AD 2.EGPO-8-6

INSTRUMENT APPROACH CHART NDB(L)/DME RWY 36 - ICAO

AD 2.EGPO-8-7

INSTRUMENT APPROACH CHART NDB(L) RWY 36 - ICAO

AD 2.EGPO-8-8

INSTRUMENT APPROACH CHART DIRECT ARRIVALS to LOC and NDB(L) RWY 36 - ICAO

AD 2.EGPO-8-9

INSTRUMENT APPROACH CHART VOR/DME TO AERODROME - ICAO

AD 2.EGPO-8-10