

022°49'

022°50'

022°51'

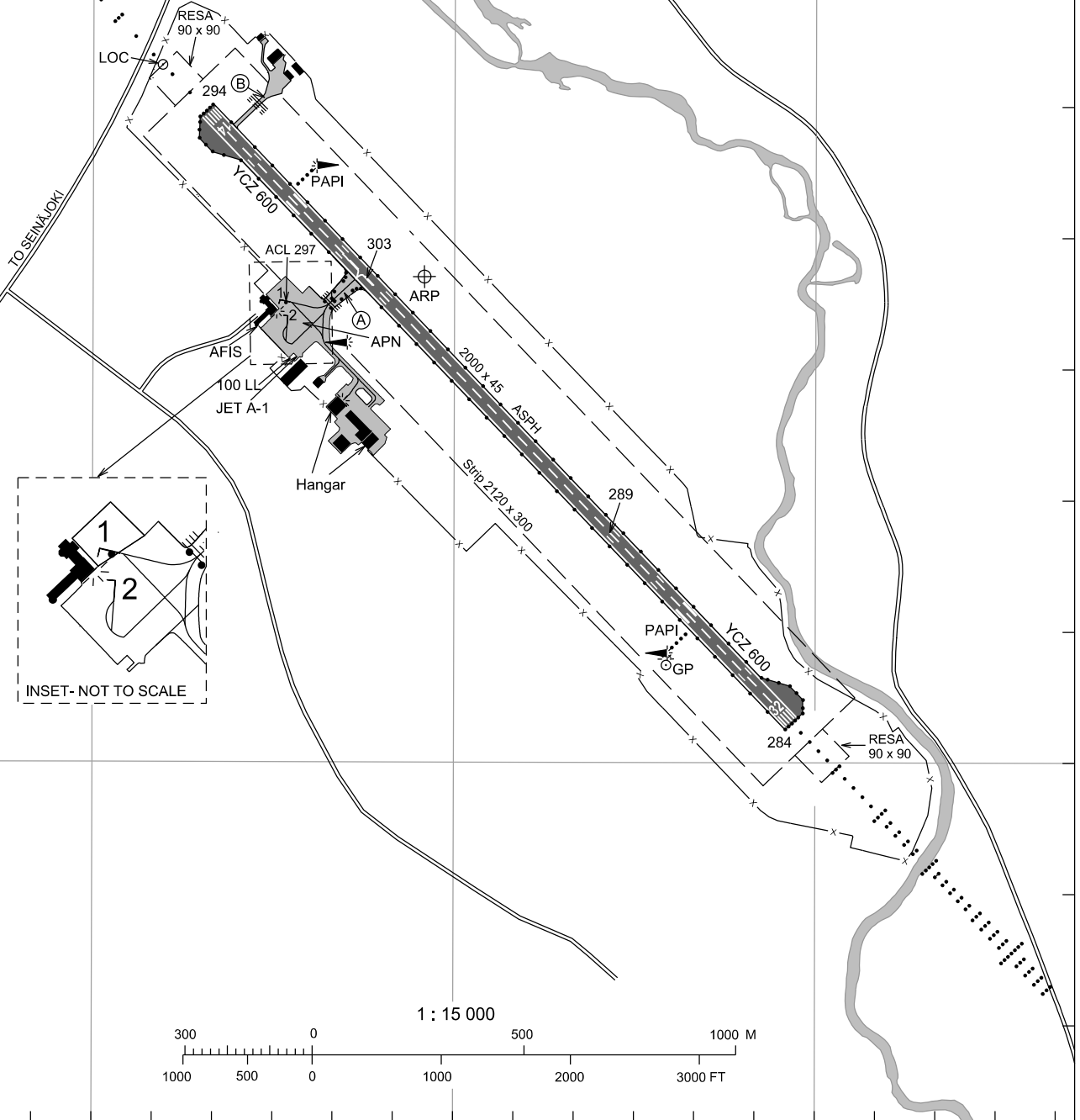
RWY	BRG MAG	COORD	PAPI	MEHT
14	128°	THR 62 41 49.61 N 022 49 18.82 E	3.0°	50
32	308°	THR 62 41 03.01 N 022 50 56.13 E	3.0°	57

Lighting, APN and TWY PCN, TWY WID, see EFSI AD 2.8

RWY PCN, see EFSI AD 2.12

COORD, ELEV and PCN for ACFT stands, see EFSI AD 2.20

BRG are MAG  
DMN In M  
ELEV In FT

 VAR 8.2° E 2015  
Annual Change +0.2°
62°  
42'62°  
42'62°  
41'62°  
41'

CHG: MAG VAR

022°49'

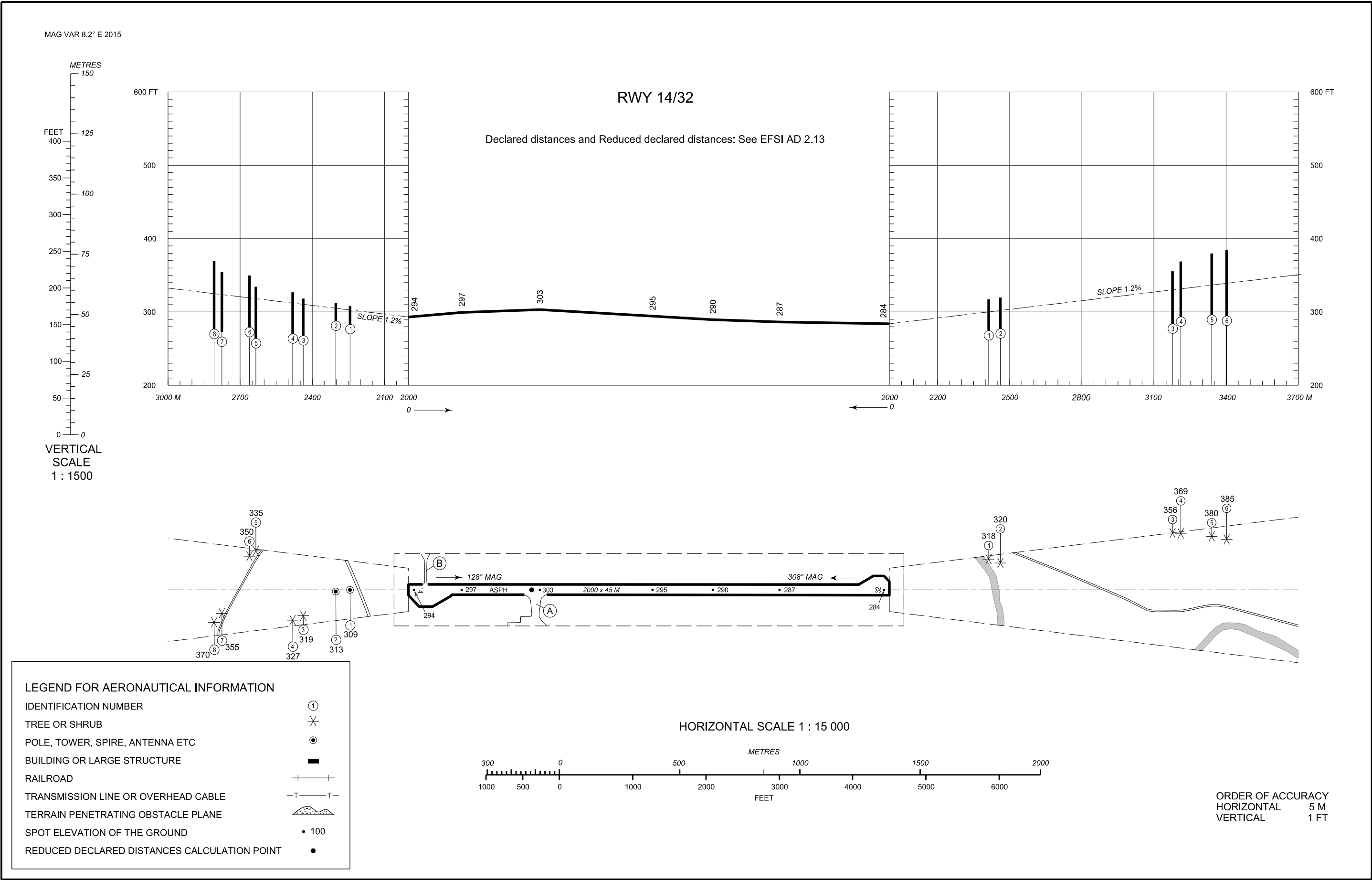
022°50'

022°51'

ELEV in FT  
DMN in M

AERODROME OBSTACLE CHART - ICAO  
TYPE A (OPERATING LIMITATIONS)

SEINÄJOKI AERODROME, FINLAND



EFSI OMNIDIRECTIONAL DEPARTURES				
RWY	PROC	Controlling OBST		
		Phase	ELEV FT	BRG GEO / DIST NM
14	Climb straight ahead until MNM turning ALT 710 FT. Note 1: Close-in obstacles exist, total number 1. Note 2: Published close-in obstacles not considered in PDG.	PDG	NIL	
		TNA	413	128° / 2.85 NM FM THR 14 624004.3N 0225411.1E
32	Climb straight ahead until MNM turning ALT 690 FT.	PDG	NIL	
		TNA	NIL	

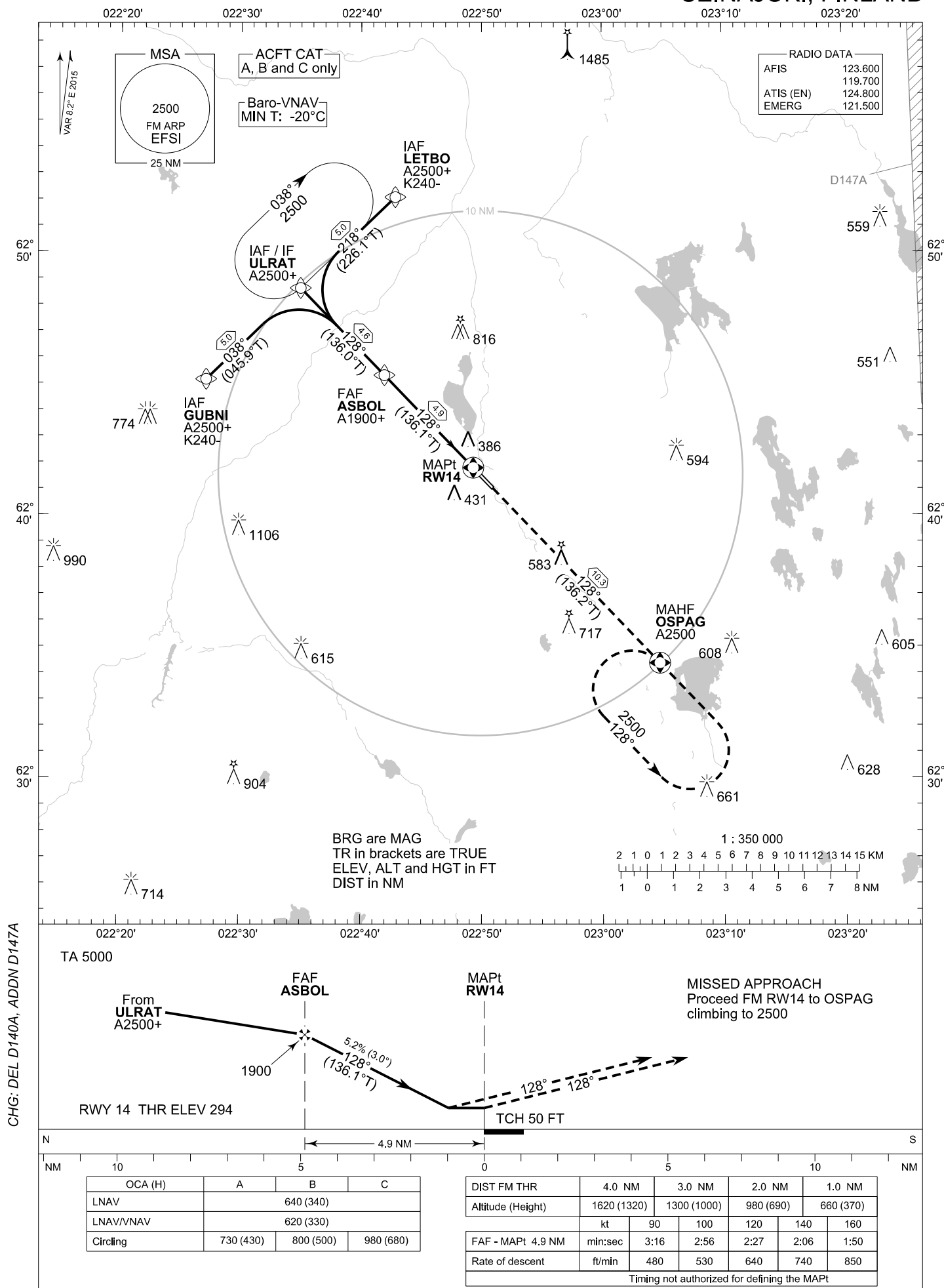
EFSI RWY 14 CLOSE-IN OBSTACLES		
NR	COORD	ELEV FT
1.	624055.9N 0225140.6E	373

EFSI RWY 32 CLOSE-IN OBSTACLES		
NR	COORD	ELEV FT
	NIL	

# INSTRUMENT APPROACH CHART - ICAO

ELEV 303 FT  
HEIGHTS RELATED TO  
THR RWY 14 ELEV 294 FT

RNAV (GNSS) RWY 14  
SEINÄJOKI AERODROME  
SEINÄJOKI, FINLAND



EFSI RNAV (GNSS) RWY 14										
PROC ID NAV SPEC	SEQ NR	P/T	WPT			MAG GEO TR	DIST NM	Turn Direction	Constraints	
			ID	Type	Flyover				LVL	Speed
R14 LETBO RNP APCH	005	IF	LETBO	IAF	-	218°	5.0	L	A2500+	K240-
	010	TF	ULRAT	IF	-	226.1°T			A2500+	
	020	TF	ASBOL	FAF	-	128°	4.6		A1900+	
	030	TF	RW14	MAPt	Y	136.0°T	4.9			
	040	TF	OSPAG	MAHF	Y	136.1°T	10.3			
						128°				
						136.2°T			A2500	

EFSI RNAV (GNSS) RWY 14										
PROC ID NAV SPEC	SEQ NR	P/T	WPT			MAG GEO TR	DIST NM	Turn Direction	Constraints	
			ID	Type	Flyover				LVL	Speed
R14 ULRAT RNP APCH	010	IF	ULRAT	IAF/IF	-				A2500+	
	020	TF	ASBOL	FAF	-	128°	4.6		A1900+	
						136.0°T				
	030	TF	RW14	MAPt	Y	128°	4.9			
						136.1°T				
	040	TF	OSPAG	MAHF	Y	128°	10.3		A2500	
136.2°T										

EFSI RNAV (GNSS) RWY 14										
PROC ID NAV SPEC	SEQ NR	P/T	WPT			MAG GEO TR	DIST NM	Turn Direction	Constraints	
			ID	Type	Flyover				LVL	Speed
R14 GUBNI RNP APCH	005	IF	GUBNI	IAF	-	038°	5.0	R	A2500+	K240-
	010	TF	ULRAT	IF	-	045.9°T			A2500+	
	020	TF	ASBOL	FAF	-	128°	4.6		A1900+	
						136.0°T	4.9			
	030	TF	RW14	MAPt	Y	128°	10.3			
	040	TF	OSPAG	MAHF	Y	136.1°T				
						128°			A2500	
						136.2°T				

RNAV Holdings							
ID	INBD TR	INBD MAG	Turn Direction	MAX IAS	MNM HLDG LVL	TIME	DIST NM
ULRAT	226.1°T	218°	Right	230 KT	A2500	1 MIN	-
OSPAG	316.2°T	308°	Left	230 KT	A2500	1 MIN	-

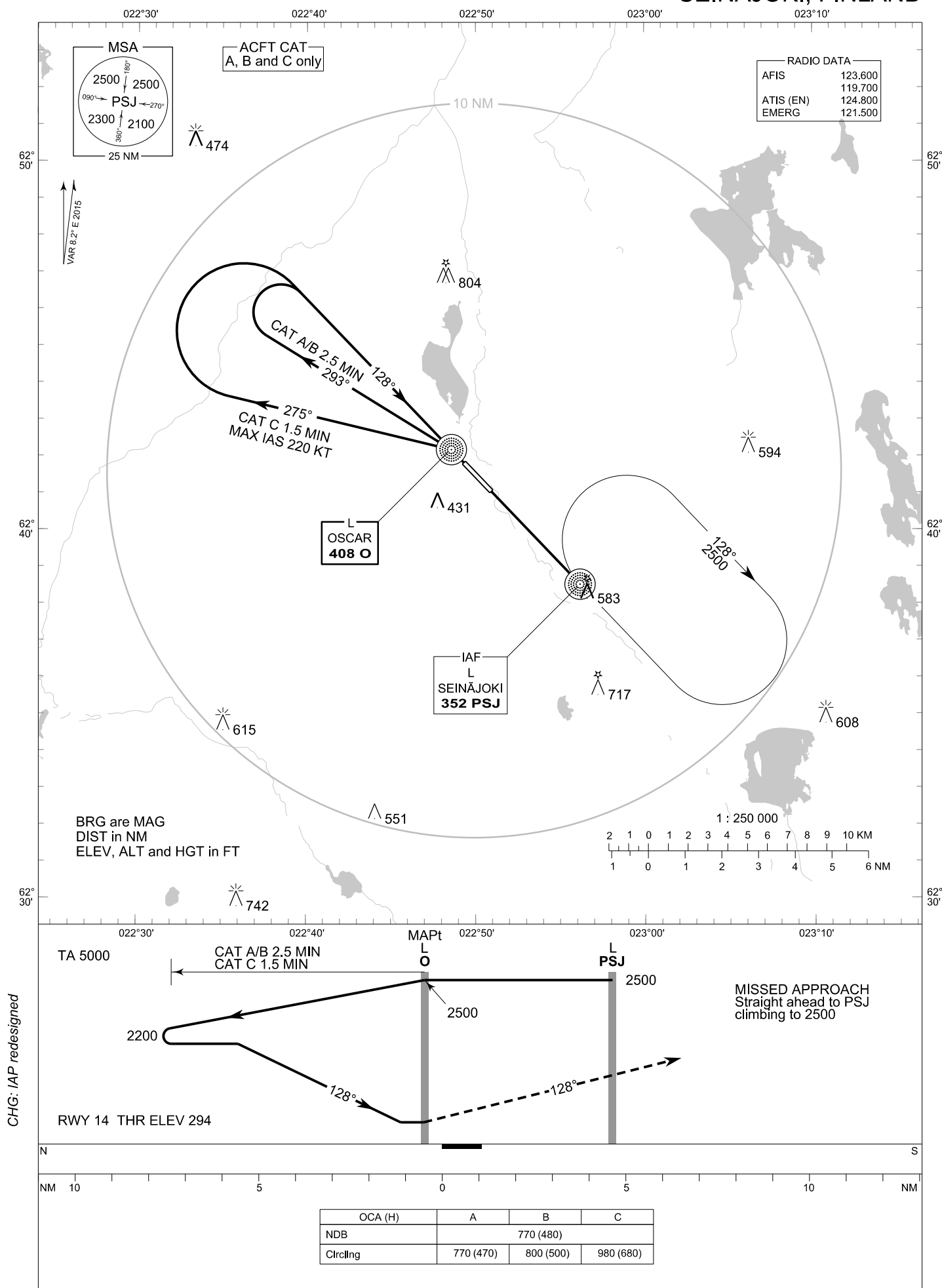
WPT COORD
SEE PAGE EFSI AD 2.15 - 1

FINAL APPROACH PARAMETERS			
LNAV Gradient	Baro-VNAV		TCH
	VPA	MNM T	
5.24 % (3.00°)	3.00°	-20°C	50 FT

# INSTRUMENT APPROACH CHART - ICAO

ELEV 303 FT  
HEIGHTS RELATED TO  
THR RWY 14 ELEV 294 FT

NDB RWY 14  
SEINÄJOKI AERODROME  
SEINÄJOKI, FINLAND

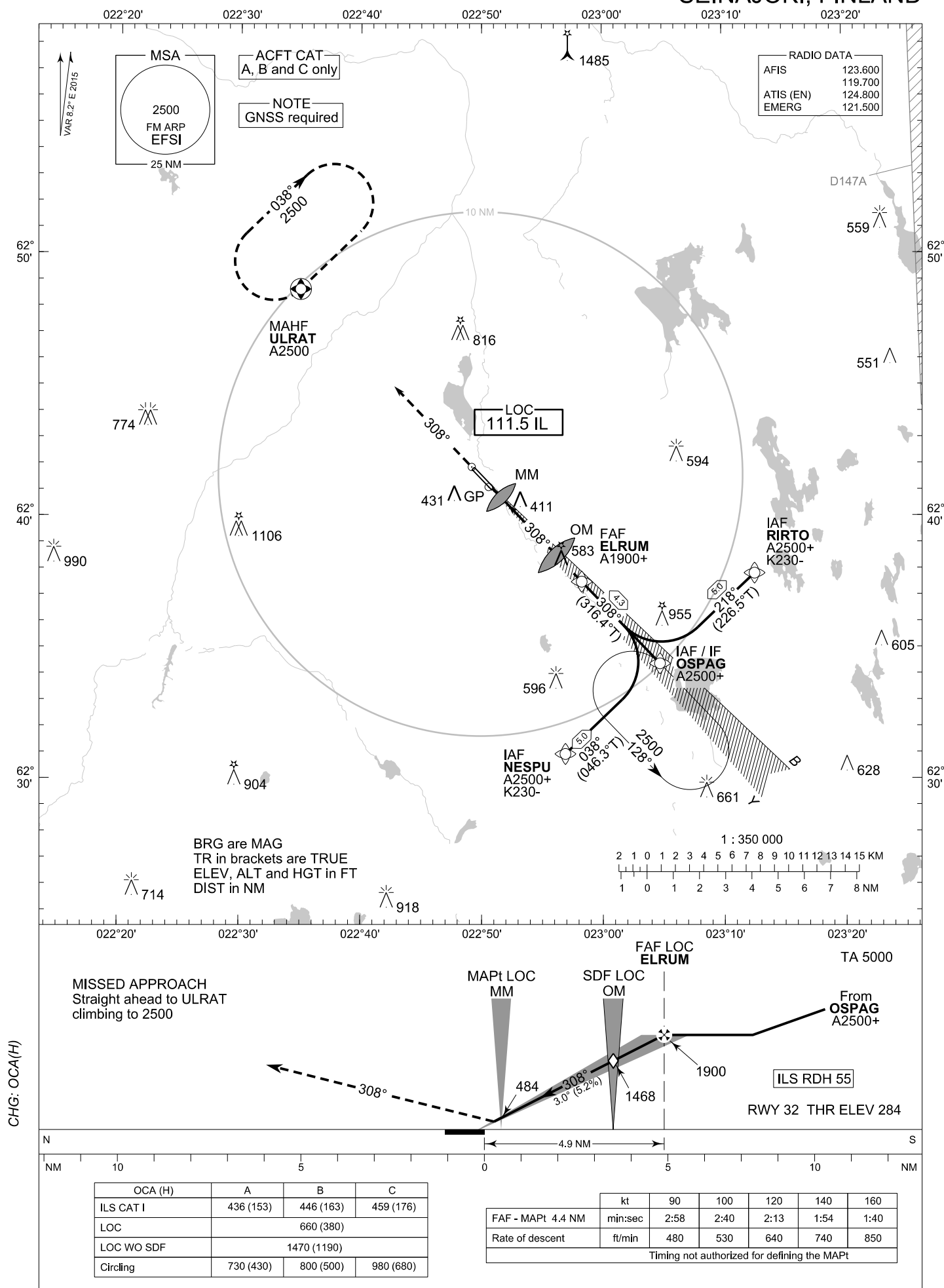


CHG: IAP redesigned

# INSTRUMENT APPROACH CHART - ICAO

ELEV 303 FT  
HEIGHTS RELATED TO  
THR RWY 32 ELEV 284 FT

ILS Z or LOC Z RWY 32  
SEINÄJOKI AERODROME  
SEINÄJOKI, FINLAND



EFSI ILS Z or LOC Z RWY 32										
PROC ID NAV SPEC	SEQ NR	P/T	WPT			MAG GEO TR	DIST NM	Turn Direction	Constraints	
			ID	Type	Flyover				LVL	Speed
I32 NESPU RNP APCH	005	IF	NESPU	IAF	-	038° 046.3°T	5.0	L	A2500+	K230-
	010	TF	OSPAG	IF	-	308° 316.4°T	4.3		A2500+	
	020	TF	ELRUM	FAF LOC	-				A1900+	
	030	TF	MM	MAPt LOC	Y	308° 316.2°T	-		A800+	
	040	CA	-	-	-	-	-		A2500	
	050	DF	ULRAT	MAHF	-					

EFSI ILS Z or LOC Z RWY 32										
PROC ID NAV SPEC	SEQ NR	P/T	WPT			MAG GEO TR	DIST NM	Turn Direction	Constraints	
			ID	Type	Flyover				LVL	Speed
I32 OSPAG RNP APCH	010	IF	OSPAG	IAF/IF	-	308° 316.4°T	4.3		A2500+	
	020	TF	ELRUM	FAF LOC	-				A1900+	
	030	TF	MM	MAPt LOC	Y	308° 316.2°T	-		A800+	
	040	CA	-	-	-	-	-		A2500	
	050	DF	ULRAT	MAHF	-					

EFSI ILS Z or LOC Z RWY 32										
PROC ID NAV SPEC	SEQ NR	P/T	WPT			MAG GEO TR	DIST NM	Turn Direction	Constraints	
			ID	Type	Flyover				LVL	Speed
I32 RIRTO RNP APCH	005	IF	RIRTO	IAF	-	218° 226.5°T	5.0	R	A2500+	K230-
	010	TF	OSPAG	IF	-	308° 316.4°T	4.3		A2500+	
	020	TF	ELRUM	FAF LOC	-				A1900+	
	030	TF	MM	MAPt LOC	Y	308° 316.2°T	-		A800+	
	040	CA	-	-	-	-	-		A2500	
	050	DF	ULRAT	MAHF	-					

RNAV Holdings							
ID	INBD TR	INBD MAG	Turn Direction	MAX IAS	MNM HLDG LVL	TIME	DIST NM
OSPAG	316.2°T	308°	Left	230 KT	A2500	1 MIN	-
ULRAT	226.1°T	218°	Right	230 KT	A2500	1 MIN	-

WPT COORD
SEE PAGE EFSI AD 2.15 - 1

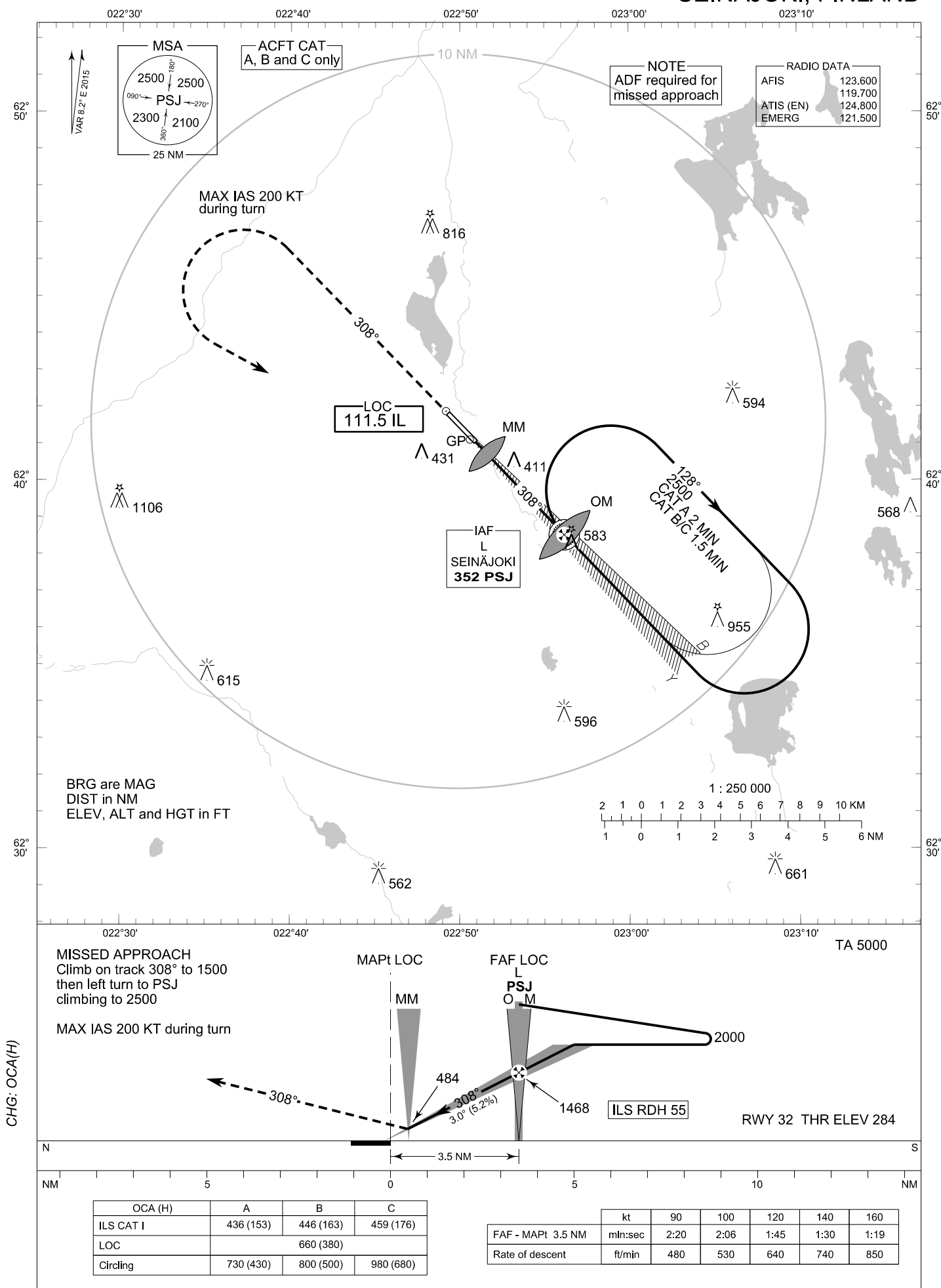
FINAL APPROACH PARAMETERS			
LOC Gradient	ILS		RDH
	CAT	GPA	
5.24 % (3.00°)	I	3.00°	55 FT



# INSTRUMENT APPROACH CHART - ICAO

ELEV 303 FT  
HEIGHTS RELATED TO  
THR RWY 32 ELEV 284 FT

ILS Y or LOC Y RWY 32  
SEINÄJOKI AERODROME  
SEINÄJOKI, FINLAND



RNAV<sub>(GNSS)</sub> RWY 32  
SEINÄJOKI AERODROME  
SEINÄJOKI, FINLAND



EFSI RNAV (GNSS) RWY 32										
PROC ID NAV SPEC	SEQ NR	P/T	WPT			MAG GEO TR	DIST NM	Turn Direction	Constraints	
			ID	Type	Flyover				LVL	Speed
R32 NESPU RNP APCH	005	IF	NESPU	IAF	-	038° 046.3°T	5.0	L	A2500+	K230-
	010	TF	OSPAG	IF	-	308° 316.4°T	4.3		A2500+	
	020	TF	ELRUM	FAF	-	308° 316.3°T	4.9		A1900+	
	030	TF	RW32	MAPt	Y	308° 316.2°T	10.6			
	040	TF	ULRAT	MAHF	-				A2500	

EFSI RNAV (GNSS) RWY 32										
PROC ID NAV SPEC	SEQ NR	P/T	WPT			MAG GEO TR	DIST NM	Turn Direction	Constraints	
			ID	Type	Flyover				LVL	Speed
R32 OSPAG RNP APCH	010	IF	OSPAG	IAF/IF	-	308° 316.4°T	4.3		A2500+	
	020	TF	ELRUM	FAF	-	308° 316.3°T	4.9		A1900+	
	030	TF	RW32	MAPt	Y	308° 316.2°T	10.6			
	040	TF	ULRAT	MAHF	-				A2500	

EFSI RNAV (GNSS) RWY 32										
PROC ID NAV SPEC	SEQ NR	P/T	WPT			MAG GEO TR	DIST NM	Turn Direction	Constraints	
			ID	Type	Flyover				LVL	Speed
R32 RIRTO RNP APCH	005	IF	RIRTO	IAF	-	218° 226.5°T	5.0	R	A2500+	K230-
	010	TF	OSPAG	IF	-	308° 316.4°T	4.3		A2500+	
	020	TF	ELRUM	FAF	-	308° 316.3°T	4.9		A1900+	
	030	TF	RW32	MAPt	Y	308° 316.2°T	10.6			
	040	TF	ULRAT	MAHF	-				A2500	

RNAV Holdings							
ID	INBD TR	INBD MAG	Turn Direction	MAX IAS	MNM HLDG LVL	TIME	DIST NM
OSPAG	316.2°T	308°	Left	230 KT	A2500	1 MIN	-
ULRAT	226.1°T	218°	Right	230 KT	A2500	1 MIN	-

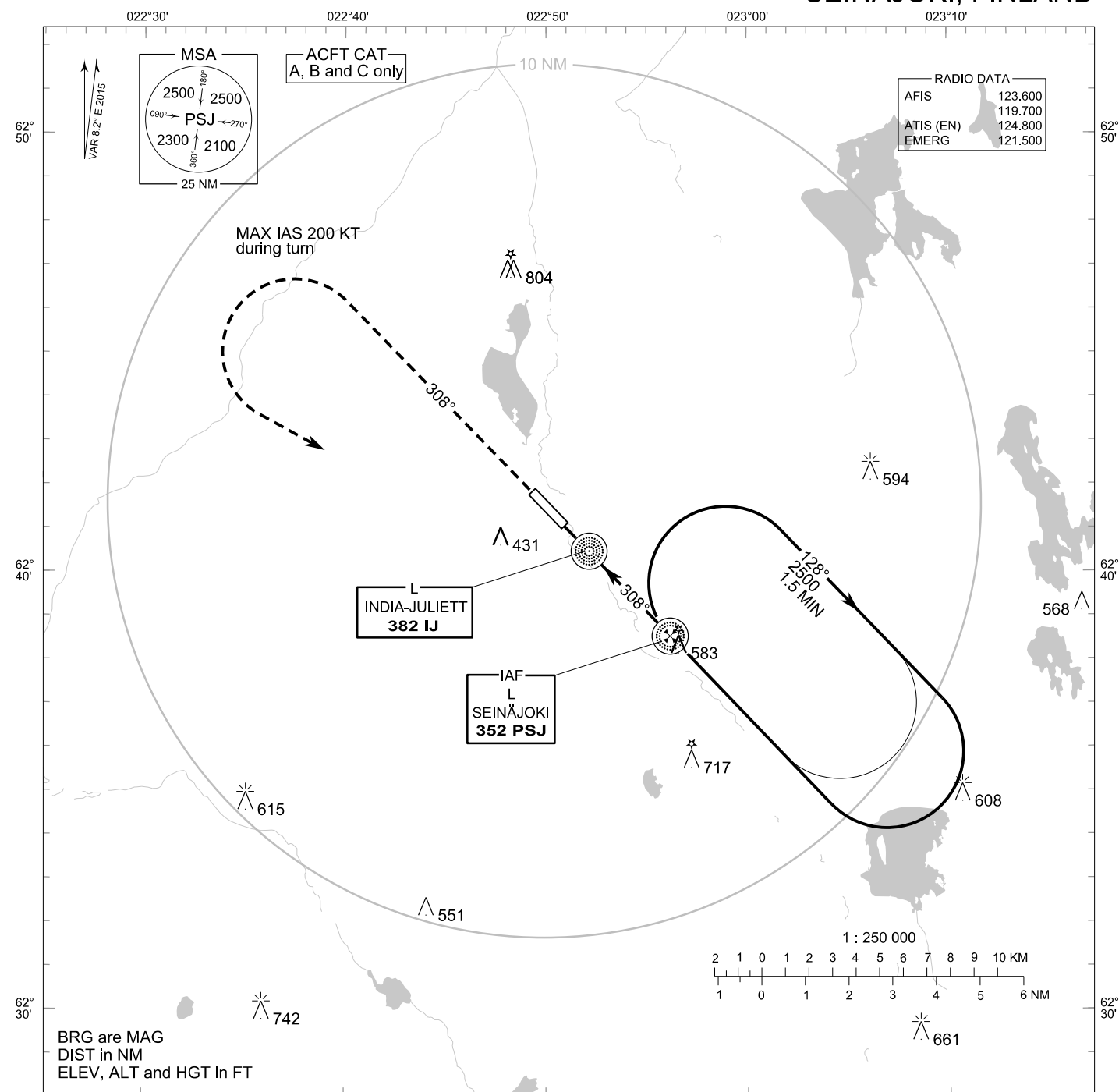
WPT COORD
SEE PAGE EFSI AD 2.15 - 1

FINAL APPROACH PARAMETERS			
LNAV Gradient	Baro-VNAV		TCH
	VPA	MNM T	
5.24 % (3.00°)	3.00°	-20°C	55 FT

# INSTRUMENT APPROACH CHART - ICAO

ELEV 303 FT  
HEIGHTS RELATED TO  
THR RWY 32 ELEV 284 FT

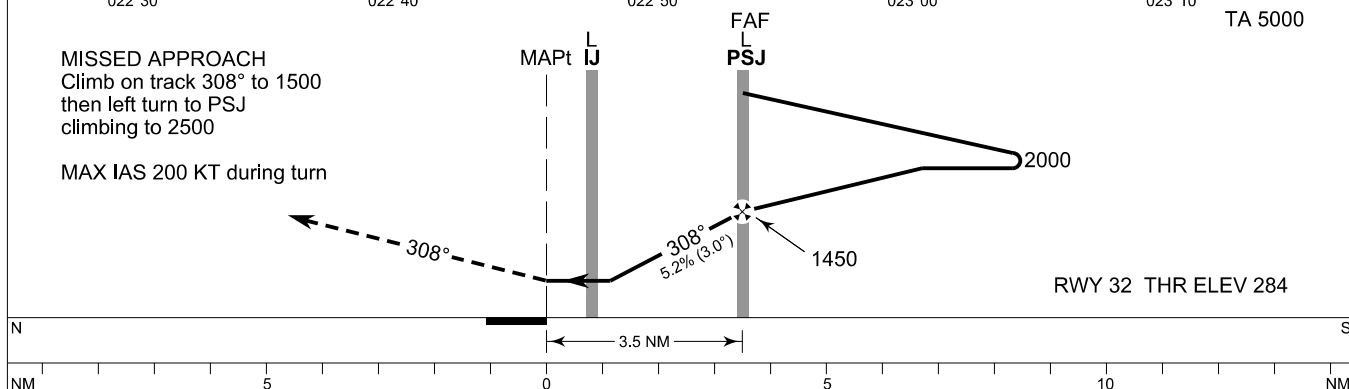
NDB RWY 32  
SEINÄJOKI AERODROME  
SEINÄJOKI, FINLAND



CHG: IAP redesigned

MISSED APPROACH  
Climb on track 308° to 1500  
then left turn to PSJ  
climbing to 2500

MAX IAS 200 KT during turn



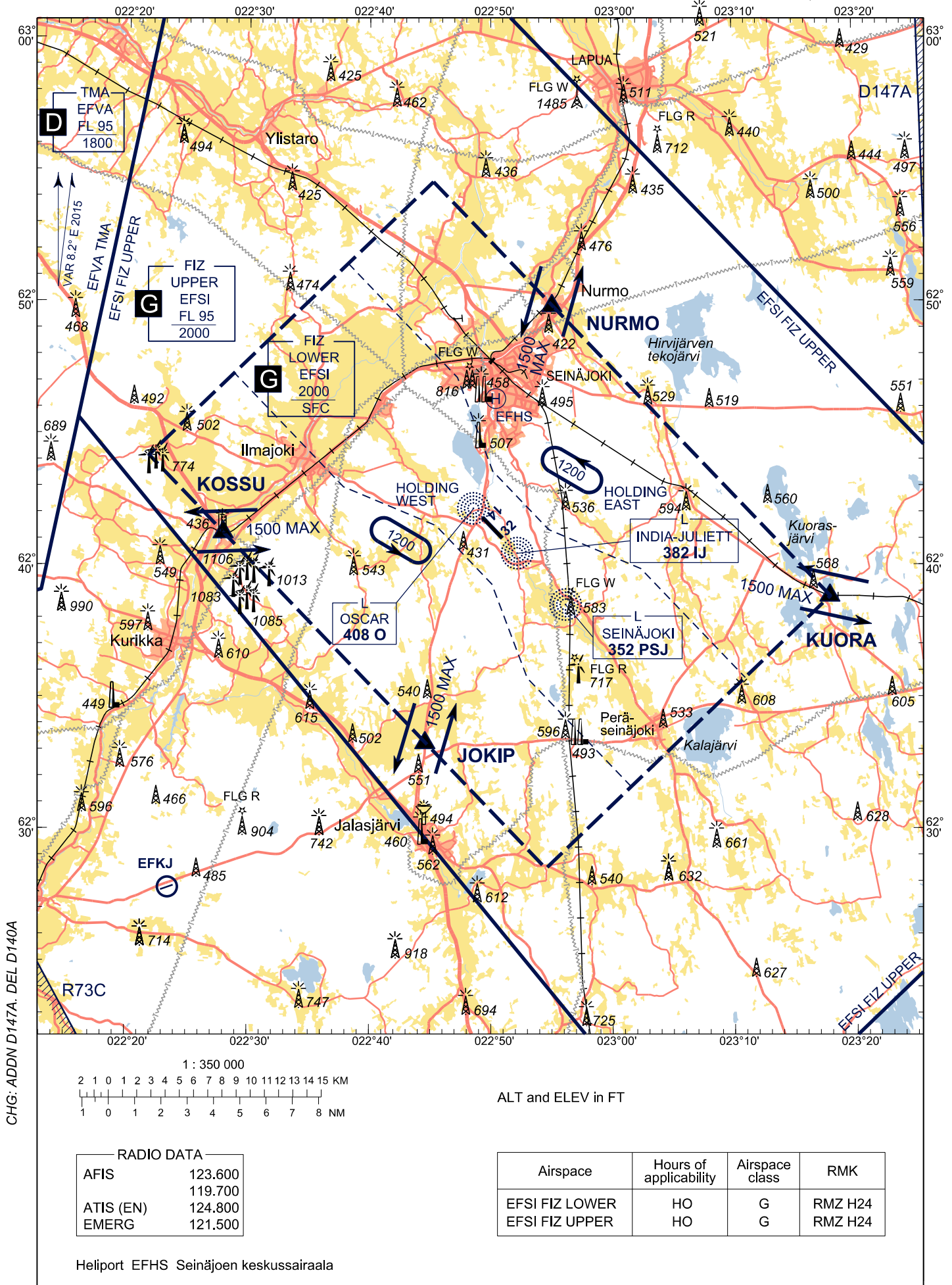
OCA (H)	A	B	C
NDB	680 (400)		
Circling	730 (430)	800 (500)	980 (680)

kt	90	100	120	140	160
FAF - MAPt 3.5 NM	2:20	2:06	1:45	1:30	1:19
Rate of descent	480	530	640	740	850

VISUAL  
APPROACH CHART - ICAO

ELEV 303 FT

SEINÄJOKI, FINLAND

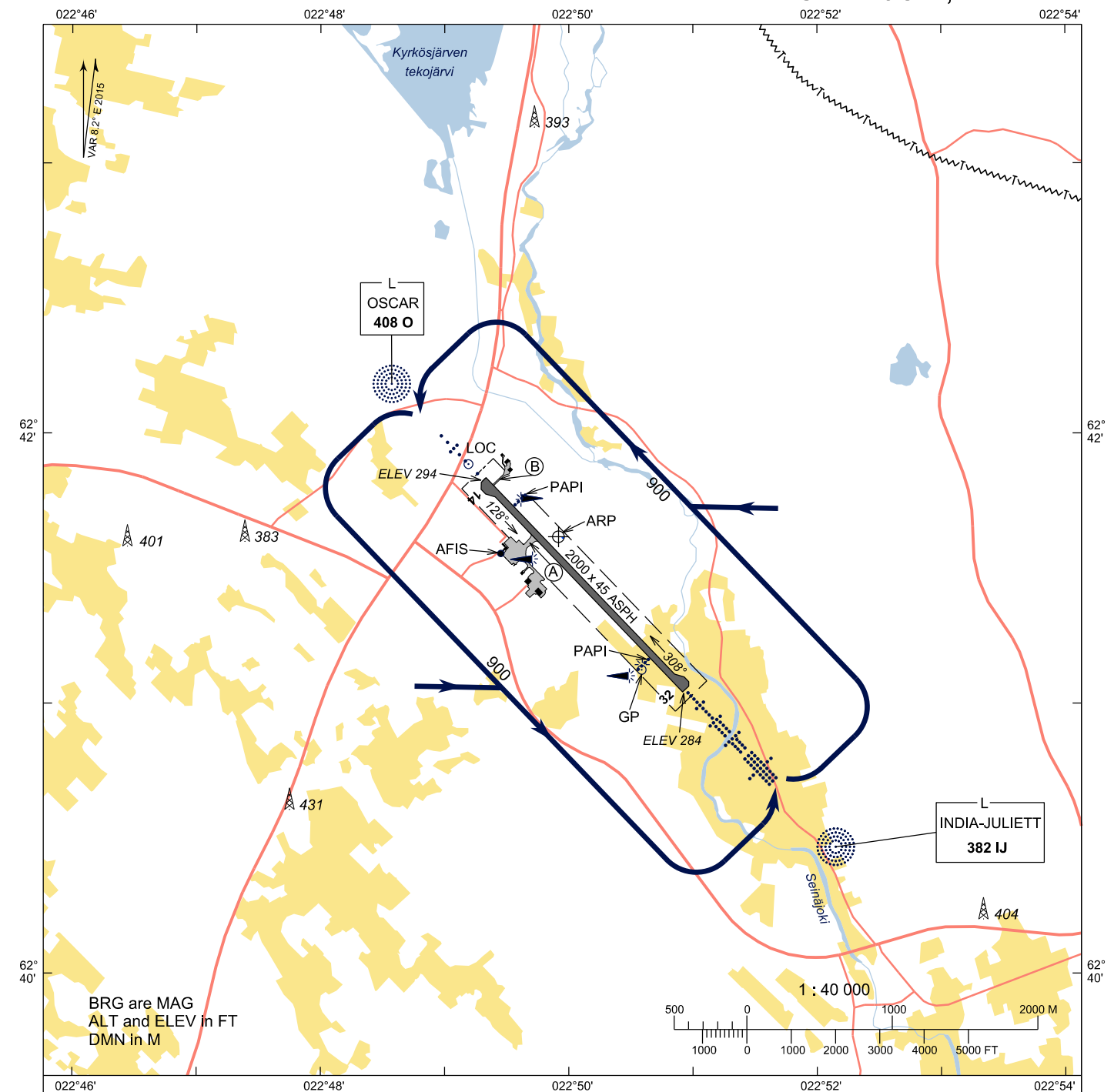


## LANDING CHART

LAT 62 41 37 N  
LONG 022 49 55 E

ELEV 303 FT

SEINÄJOKI, FINLAND



BRG are MAG  
ALT and ELEV in FT  
DMN in M

## AERODROME LIGHTING

ALS:	W LIH / R LIL	RWY 14/32
PAPI:	3.0° MEHT 50	RWY 14
	3.0° MEHT 57	RWY 32
THR:	G LIH	RWY 14/32
REDL:	W LIH YCZ 600	RWY 14/32
RENL:	R LIH	RWY 14/32
TWY:	B LIL	
APN:	B LIL	
OBST:	R LIL	

Note: PAPI and LIH can be dimmed.

CHG: MAG VAR